

DATA SHEET

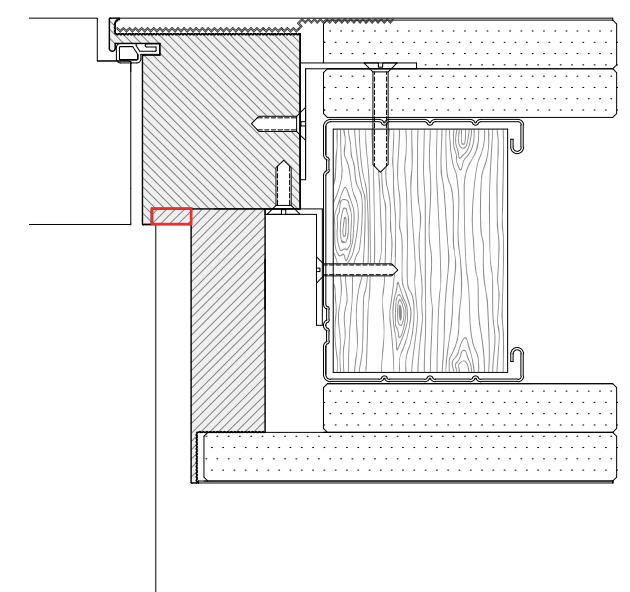
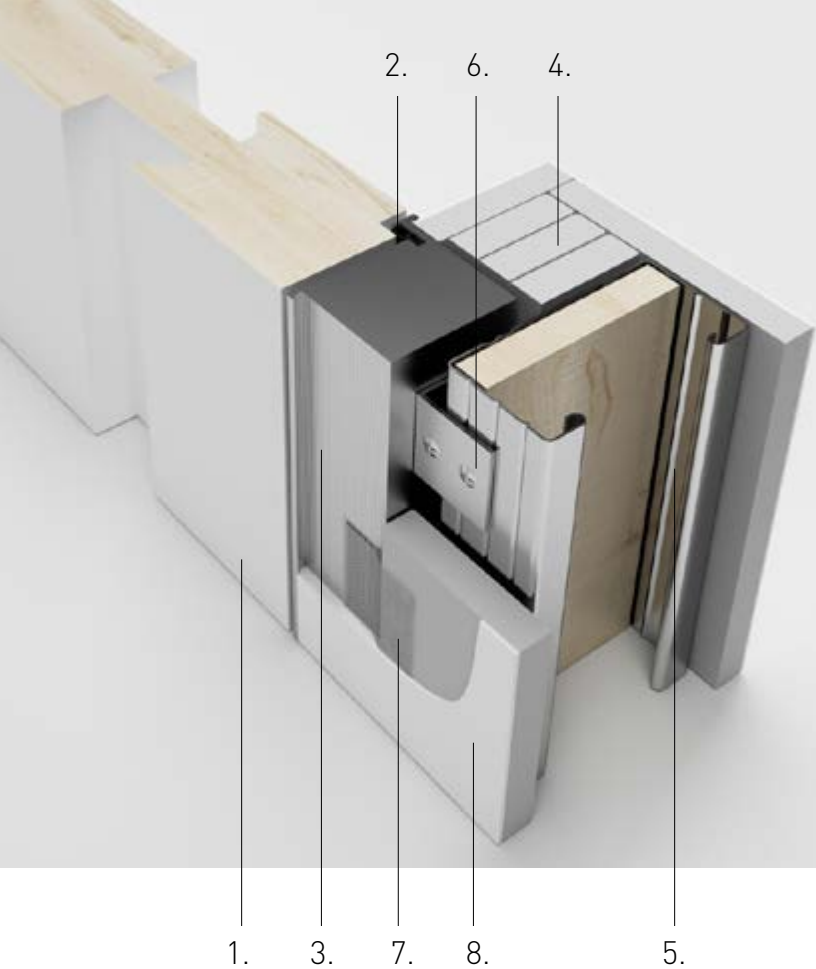
Frame for flush-to-wall doors and optional profiles

The Staino&Staino flush-to-wall frames are enriched with exclusive optional profiles, designed for multiple aesthetic and commercial advantages:

- Rapidity in finishing the bundles;
- Greater precision in the finishing of the walls;
- Personalized predisposition for the skirting board.



STAINO&STAINO
Doors and furnishing systems



OPTIONAL profile

for frame extension
on plasterboard

Raw aluminum profile, to be painted like the wall, made to measure with depth varying from 72 to 152 mm. The use of the optional profile facilitates the finishing of the wall thickness, optimizing working times on site.

5. Skirting positioning space

The optional profile can be positioned at the distance requested by the customer, in relation to the presence of the skirting board and its thickness.

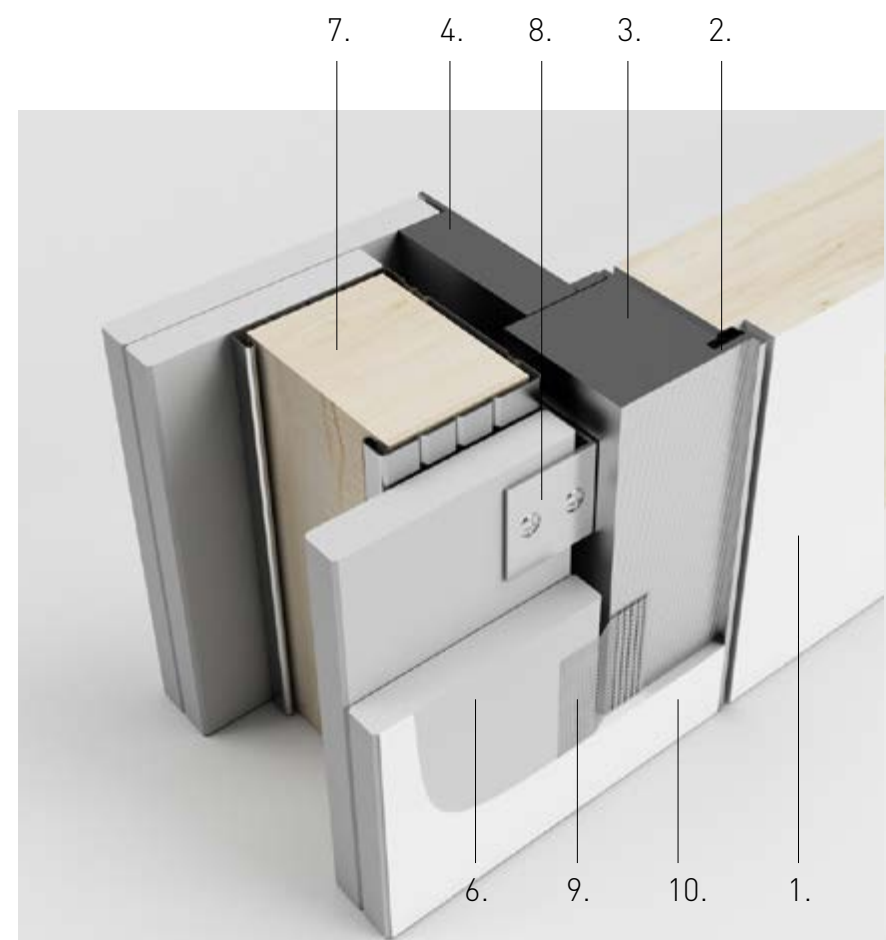
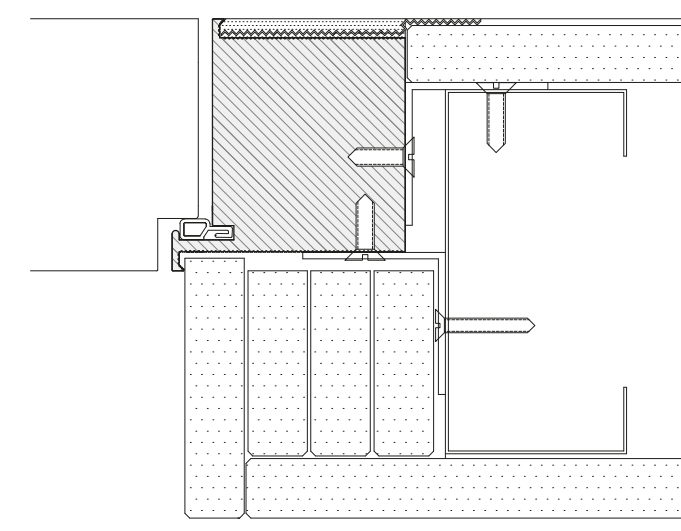
- Door .1
- Gasket .2
- Standard profile .3
- Optional profile .4
- Skirting positioning space .5
- Plasterboard .6
- Wall frame .7
- Fixing corner .8
- Anti-cracking mesh tape .9
- Finishing layer .10

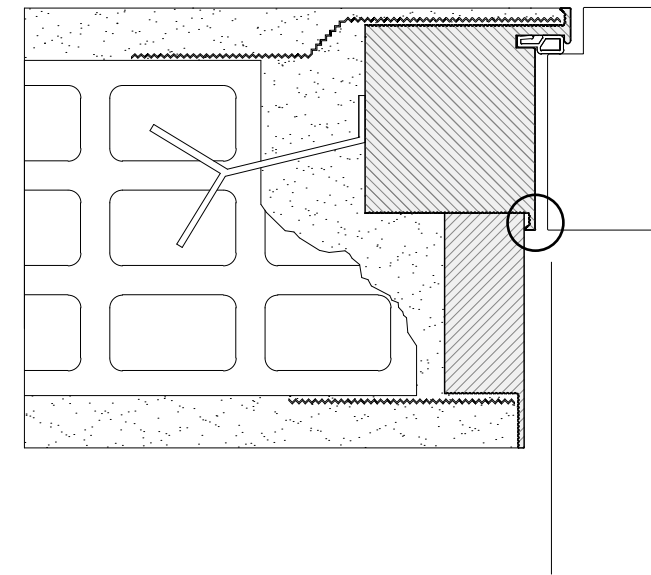
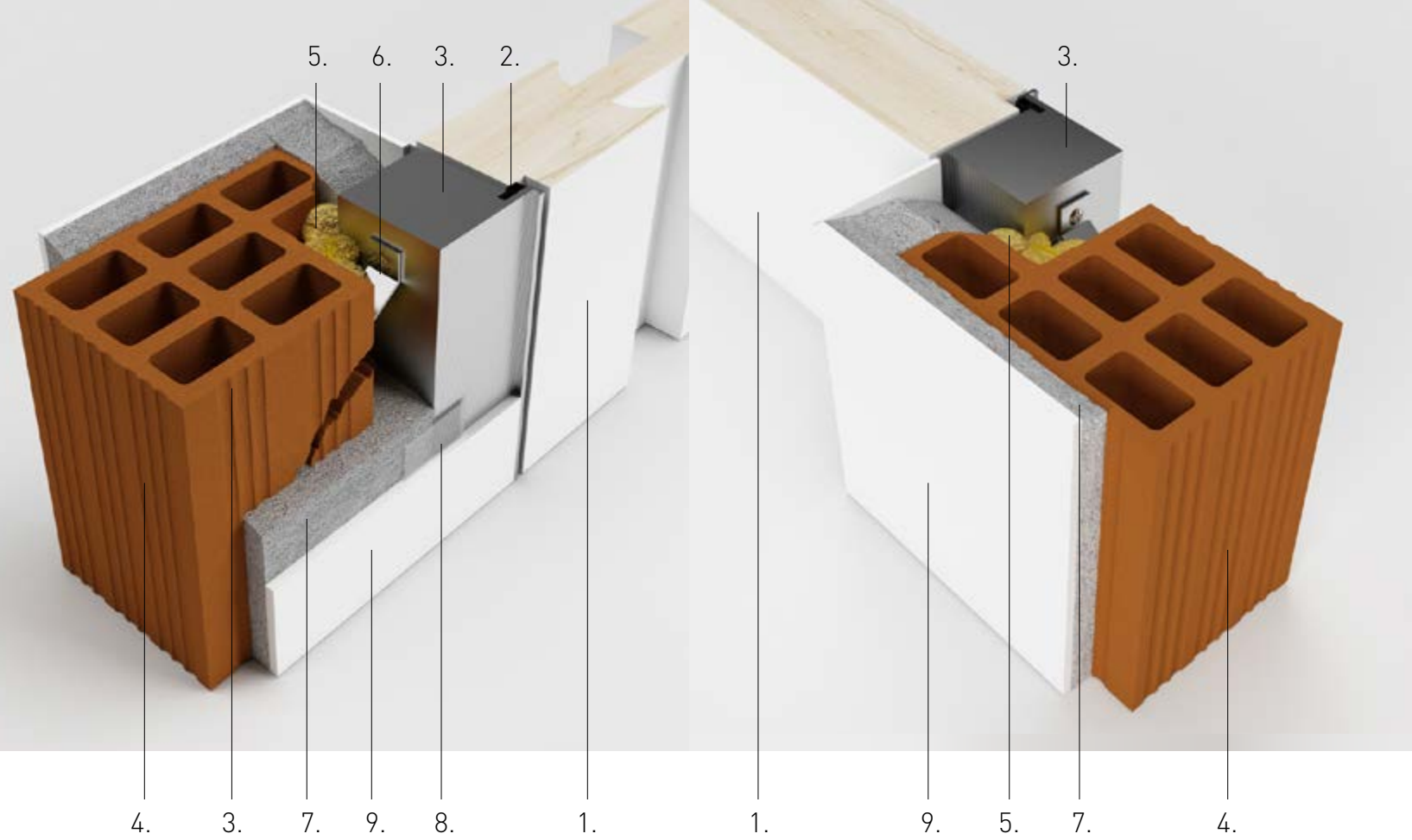
STANDARD profile

for our Segreta doors
on plasterboard

Standard flush-to-wall frame for masonry and plasterboard walls of any thickness.

- 1. Door
- 2. Gasket
- 3. Standard profile
- 4. Plasterboard
- 5. Wall frame
- 6. Fixing corner
- 7. Anti-cracking mesh tape
- 8. Finishing layer





No positioning space

The optional profile can be positioned at the distance requested by the customer, in relation to the presence of the skirting board and its thickness.

OPTIONAL profile

for frame extension
on masonry

Raw aluminum profile, to be painted like the wall, made to measure with depth varying from 72 to 152 mm. The use of the optional profile facilitates the finishing of the wall thickness, optimizing working times on site.

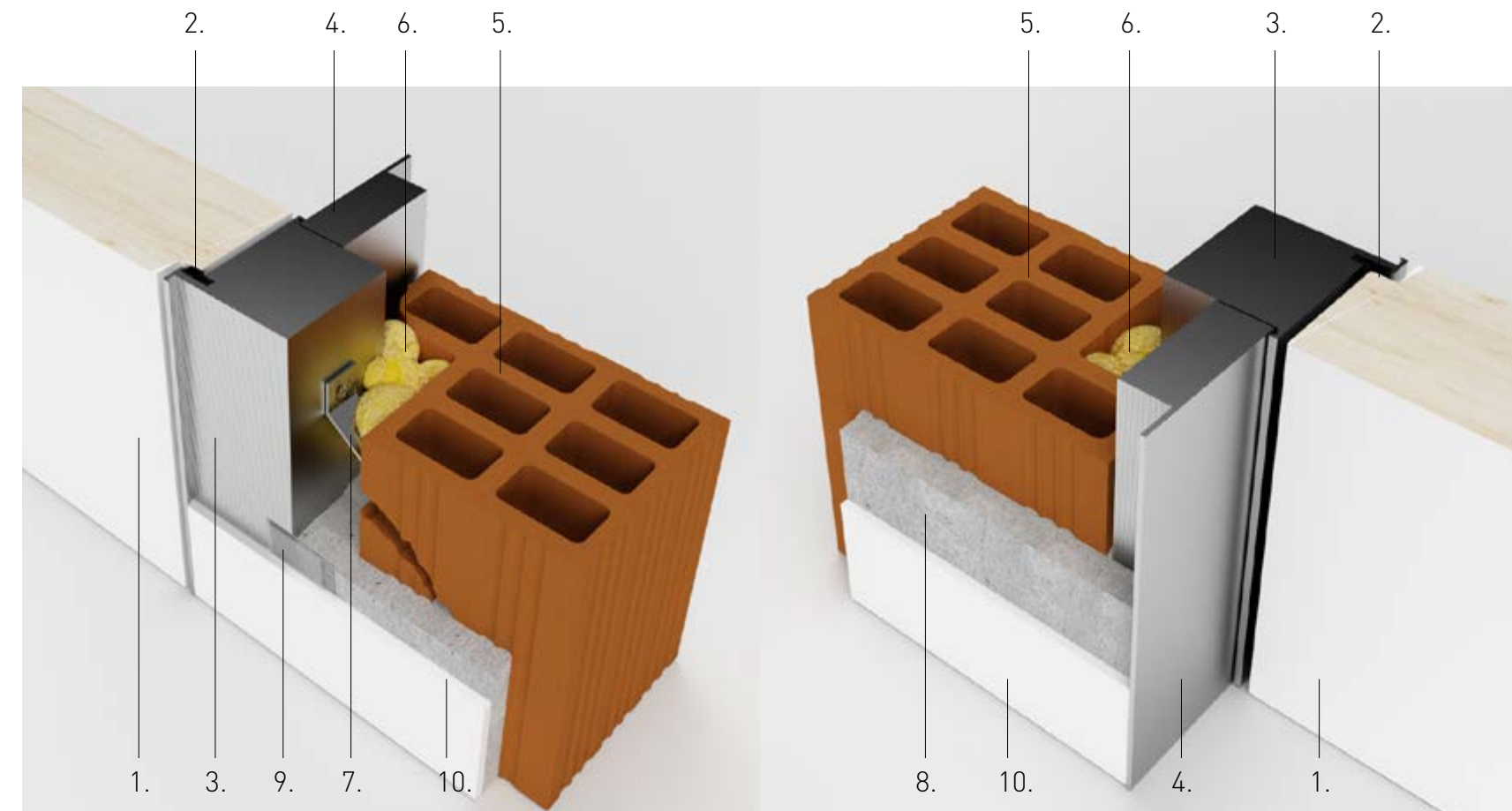
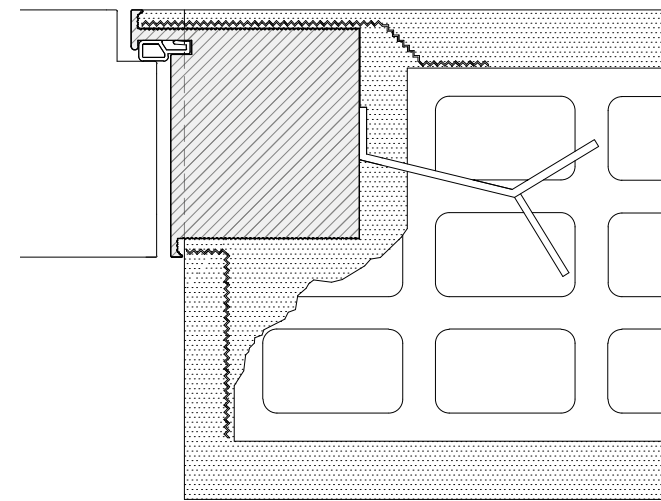
- Door .1
- Gasket .2
- Standard profile .3
- Optional profile .4
- Masonry .5
- Polyurethane foam .6
- Clamp .7
- Mortar .8
- Anti-cracking mesh tape .9
- Finishing layer .10

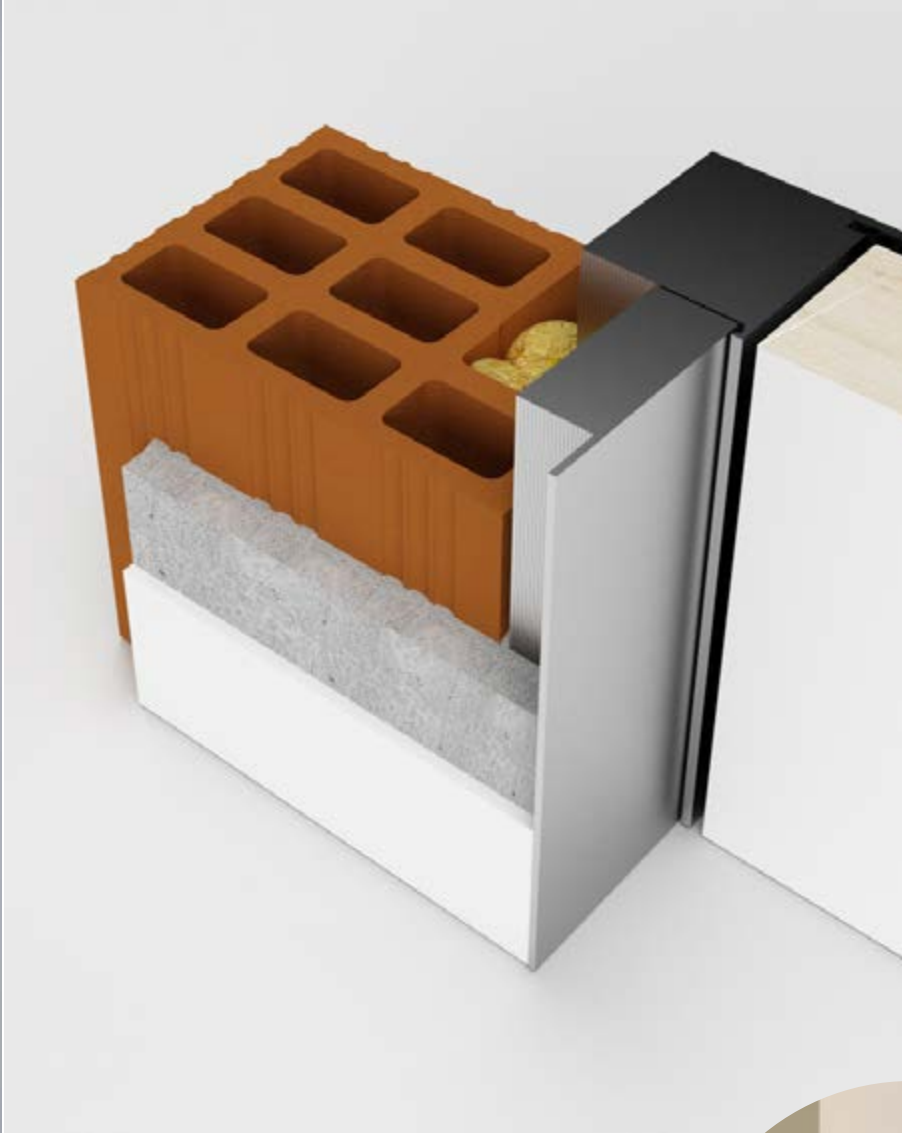
STANDARD profile

for our Segreta doors
on masonry

Standard flush-to-wall frame for masonry and plaster-board walls of any thickness.

- 1. Door
- 2. Gasket
- 3. Standard profile
- 4. Masonry
- 5. Polyurethane foam
- 6. Clamp
- 7. Mortar
- 8. Anti-cracking mesh tape
- 9. Finishing layer





EASY&FAST INSTALLATION

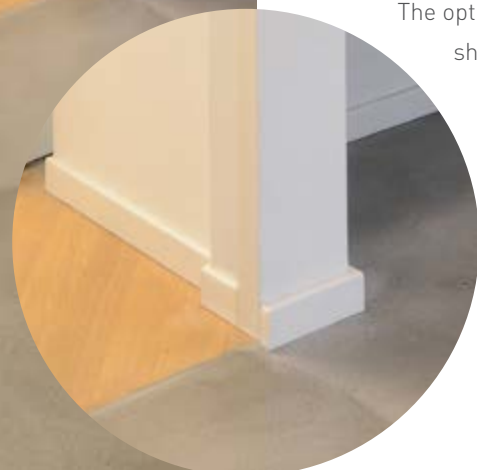
Segreta is available with push and pull opening. It is made with a sturdy 53 mm thick door, while the extruded aluminum frame allows it to be mounted flush with the wall on plasterboard or masonry walls.

The Segreta door can also be made to measure, up to 300 cm in height.

To ensure the best quality, on doors with a height of more than 210 cm, an extruded aluminum reinforcement is inserted, hidden inside the honeycomb door, this type of construction of ours ensures maximum flatness of the door.

EVERY FINITURE

The optional flush-to-wall profile, in addition to significantly reducing processing times and guaranteeing greater precision of the internal hammers, is suitable for any type of surface finish.



PROFILE WITH SKIRTING POSITIONING

IN THIS SITUATION, the use of the optional profile is highlighted in the presence of the skirting board.

The optional profile is made to measure in the factory and shipped to the customer already assembled and installed in its wall frame.

Based on the thickness of the skirting board indicated at the time of ordering, the optional profile is equipped with an additional thickness profile that distances it to the established size.

THE ADVANTAGES OF THE OPTIONAL PROFILE

The advantages of the optional Staino&Staino profile for flush-to-the-wall doors:

- Reduces possible errors in the finishing of the bundles;
- Improves the precision of the work thanks to a thickness dedicated to the management of the skirting board;
- Significantly reduces on-site processing times.

STAINO&STAINO SRL Via Danubio, 21/23/25
59100 Prato - Italy | Tel +39 0574 69 39 38
Fax +39 0574 69 43 55

www.stainoestaino.com

amministrazione@stainoestaino.it
commerciale@stainoestaino.it
export@stainoestaino.it