

STAINO & STAINO

Doors and furniture systems

COLLECTION

Segreta

*Invisible doors and handles*



The "Collection Segreta" catalogue is dedicated to the proposal of our wall-flush systems.

The completeness of the range and the exclusivity of the available customizations are the result of decades of design, development and production of our wall-flush systems. To guarantee the best possible quality, we carry out the entire production cycle within our factory: production, assembly and quality control.

For some specific components we avail ourselves of the collaboration of other leading companies in the sector of expertise, exclusively Italian, controlled and selected with the highest quality standards.

All STAINO&STAINO products are truly Made in Italy.

# INDEX



**Flush-to-the-wall swing door** 06  
thickness 53 mm

**Double sided flush-to-the-wall swing door** 18  
thicknesses 102 - 107 - 125 mm



**Flush-to-the-wall pivot door** 20  
thickness 53 mm

**Double sided flush-to-the-wall pivot door** 24  
thicknesses 102 - 107 - 125 mm



**Sliding door** 26  
inside and outside wall

**Segreta-S door** 28  
coplanar sliding door

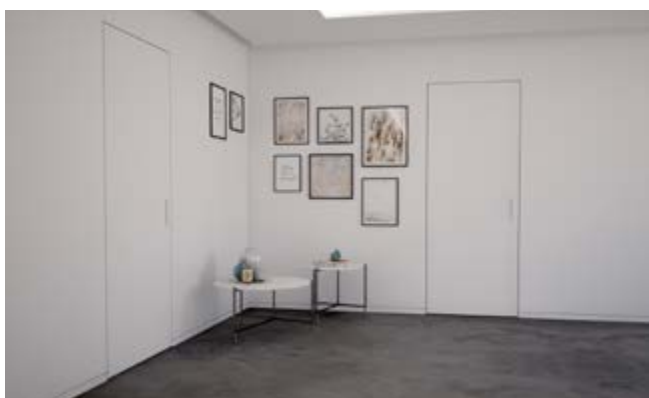


**MAGIC sliding system** 32  
with invisible rail



**XDoor®** 36  
with LED light integrated

**iDoor®** 40  
with rounded edges



**Optional profile** 50  
"frame extension"

**Recessed skirting board** 52  
flush-to-the-wall skirting board

**Dedicated handles** 58  
video e dettagli tecnici



**Segreta closures** 74  
invisible closures for cabinets  
and technical compartments

## DATA SHEETS:

Swing door 86

Pivot door 88

Sliding openings 90

Coplanar sliding door 92

**FINISHES AND DECORATIONS** 94

# Collection Segreta

The doors of the **Collezione Segreta** are the ideal product for those looking for high-quality flush-to-the-wall doors.

Our range includes swing, pivot and sliding versions.

In addition, the special double-flush-to-the-wall versions are available, the exclusive coplanar handles designed specifically for the Segreta Collection, the innovative **XDoor®** model with **LED** lighting integrated into the panel, the exclusive **Segreta-S** coplanar sliding door.

Finally, the **iDoor®** model which, thanks to its rounded design, marks the beginning of a new stylistic era for flush-to-the-wall doors.



operation video of  
**MA13 handle**



**Segreta** flush-to-the-wall swing door | door lacquered in **RAL sample colour** | coplanar handle MA13



# OPTIONAL LACQUERING

*with any type of colour*

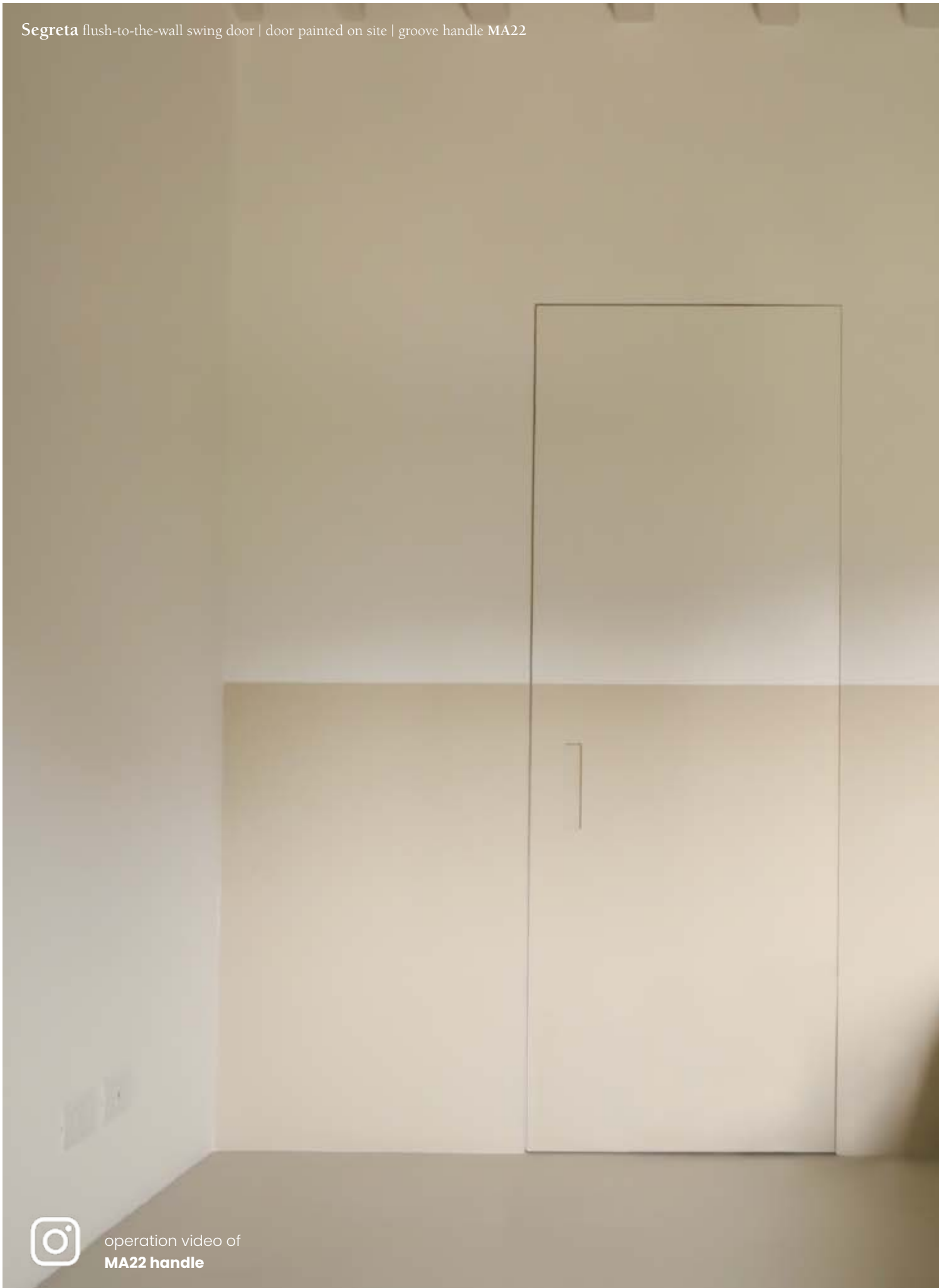
Our door can be customized with an optional matt lacquer, all the colors in the Ral or Ncs table are available. On request it is possible to order a sample color, sending the company a detail to be reproduced.

Furthermore, the customer can choose different colors for each side of the door, thus allowing total customization that responds to every aesthetic need.

**Segreta** flush-to-the-wall swing door | door lacquered in **RAL sample colour** | coplanar handle **MA13**



Segreta flush-to-the-wall swing door | door painted on site | groove handle MA22



operation video of  
**MA22 handle**

# Segreta

*flush-to-the-wall swing door*

**Segreta swing door** is available with a push or pull opening. It is made with a sturdy 53 mm thick door and is equipped with an extruded aluminum frame that allows for flush mounting on a plasterboard wall or on a brick wall.

The **Segreta door** can be made up to 300 cm high.

To ensure the best quality, on doors with a height greater than 220 cm, an extruded aluminum reinforcement hidden inside the honeycomb door is inserted. This type of construction ensures maximum flatness of the door.

**Pull version**



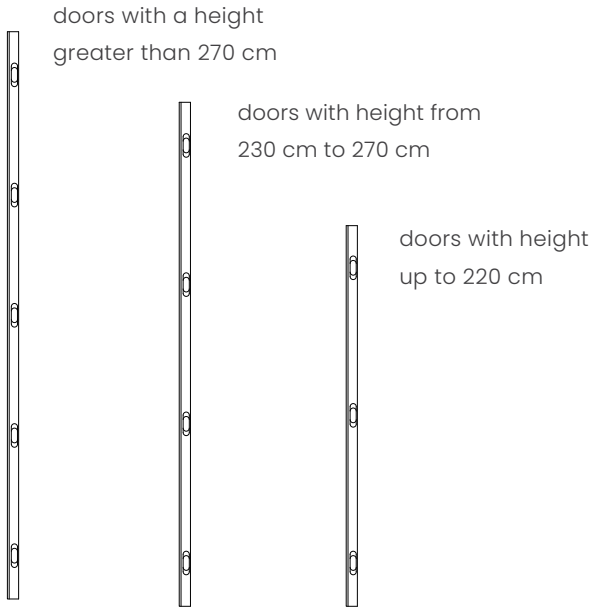
**Push version**



# OVERSIZED HINGES

*with a capacity of over 90 kg*

Segreta doors are equipped with oversized hinges with a capacity of **over 90 kg** (about three times the weight of the door); this guarantees optimal functioning of the door over time.



Segreta flush-to-the-wall swing door | door painted on site | coplanar handle MA13

operation video of MA13 handle



Segreta flush-to-the-wall swing door | door painted on site | custom handle



Segreta flush-to-the-wall pivot door | door painted on site | custom handle



## FRAME ALREADY ASSEMBLED IN THE FACTORY

*extra safety  
during assembly*

The Staino&Staino flush-to-the-wall frame is assembled in the factory and shipped **already assembled**, ready for fixing; this ensures the most correct tolerances and **reduces the possibility of errors** during the installation phases on site.

# ANODIZED FRAME

*already finished and  
pleasing to the eye*

The door frame is made of extruded aluminum already anodized in a satin silver finish.

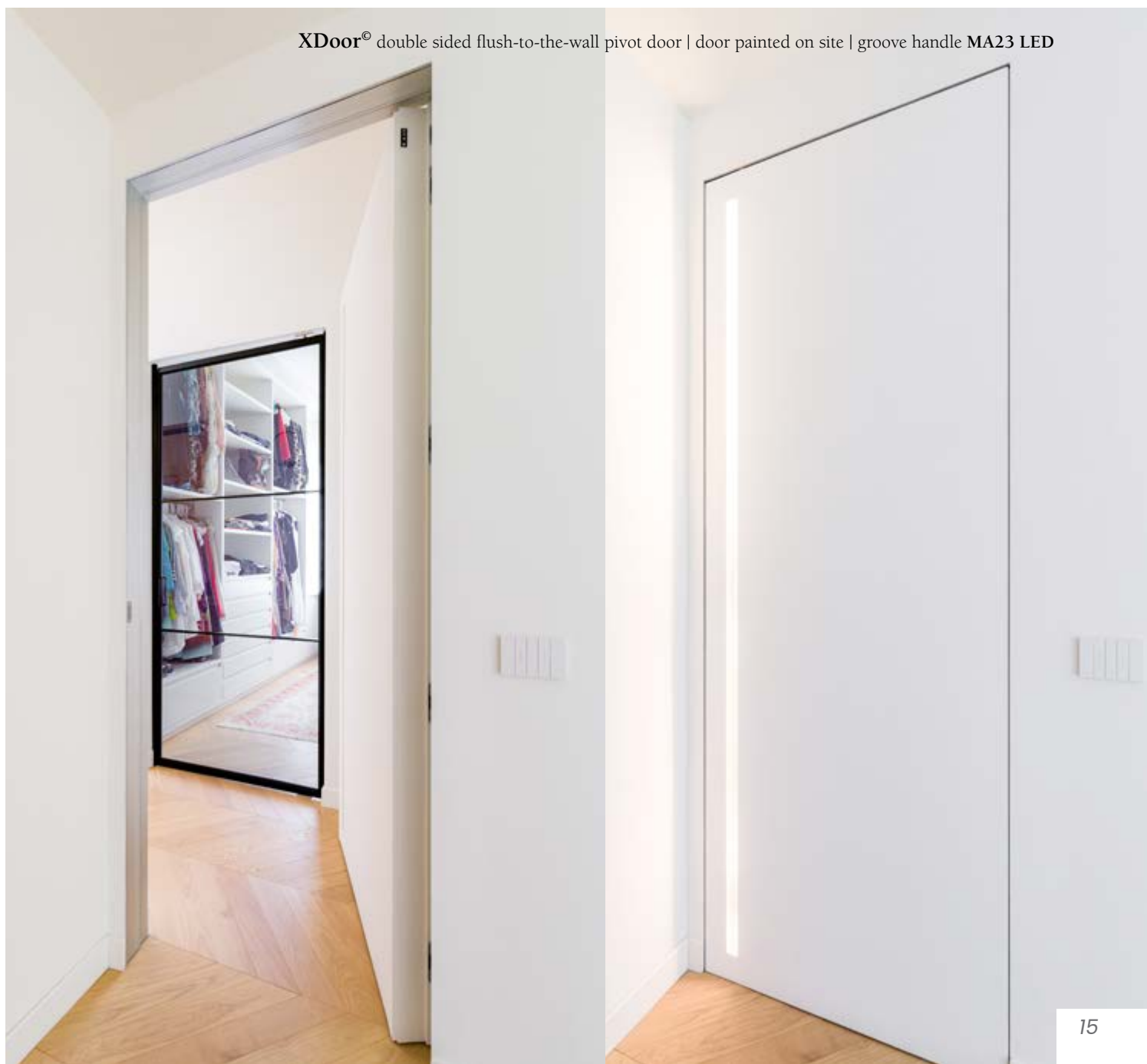
The **anodizing**, in addition to protecting the aluminum from corrosion, does not require the whitewashing of the frame which is already finished.

To preserve its aesthetics during the construction phases, an **optional protective film** can be requested to be removed at the end of the work.

The optional protective film must be requested at the time of ordering and requires a small surcharge.

The flush-to-the-wall frame can also be requested in other **optional finishes**, bronze, black, RAL sample.

XDoor® double sided flush-to-the-wall pivot door | door painted on site | groove handle MA23 LED





Segreta flush-to-the-wall swing door | door painted on site | embossed handle MA28



## CUSTOM FINISH

*doors that can be integrated with decorative mouldings and customer's skirting boards*

Our door can be enriched by the customer with decorative bands like on the walls; the **capacity** of our hinges does not fear the **additional weight**.

The optional magnetic pressure closing system is available that does not require the use of normal handles.





# Segreta

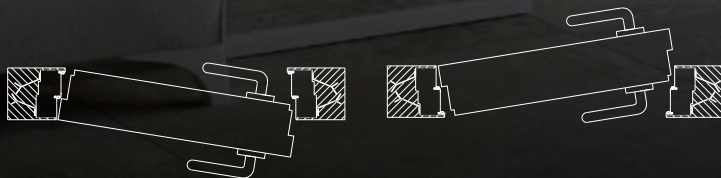
*double sided flush-to-the-wall door*

The **double sided flush-wall swing version** remains coplanar to the wall on both sides; both the frame and the door are available in three different thicknesses: 102 mm, 107 mm and 125 mm.

Upon request, double flush-wall doors can be made in custom thickness, according to the customer's needs.

**Pull version**

**Push version**

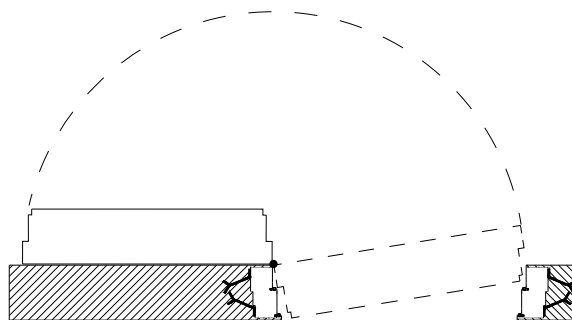


# 180° OPENING

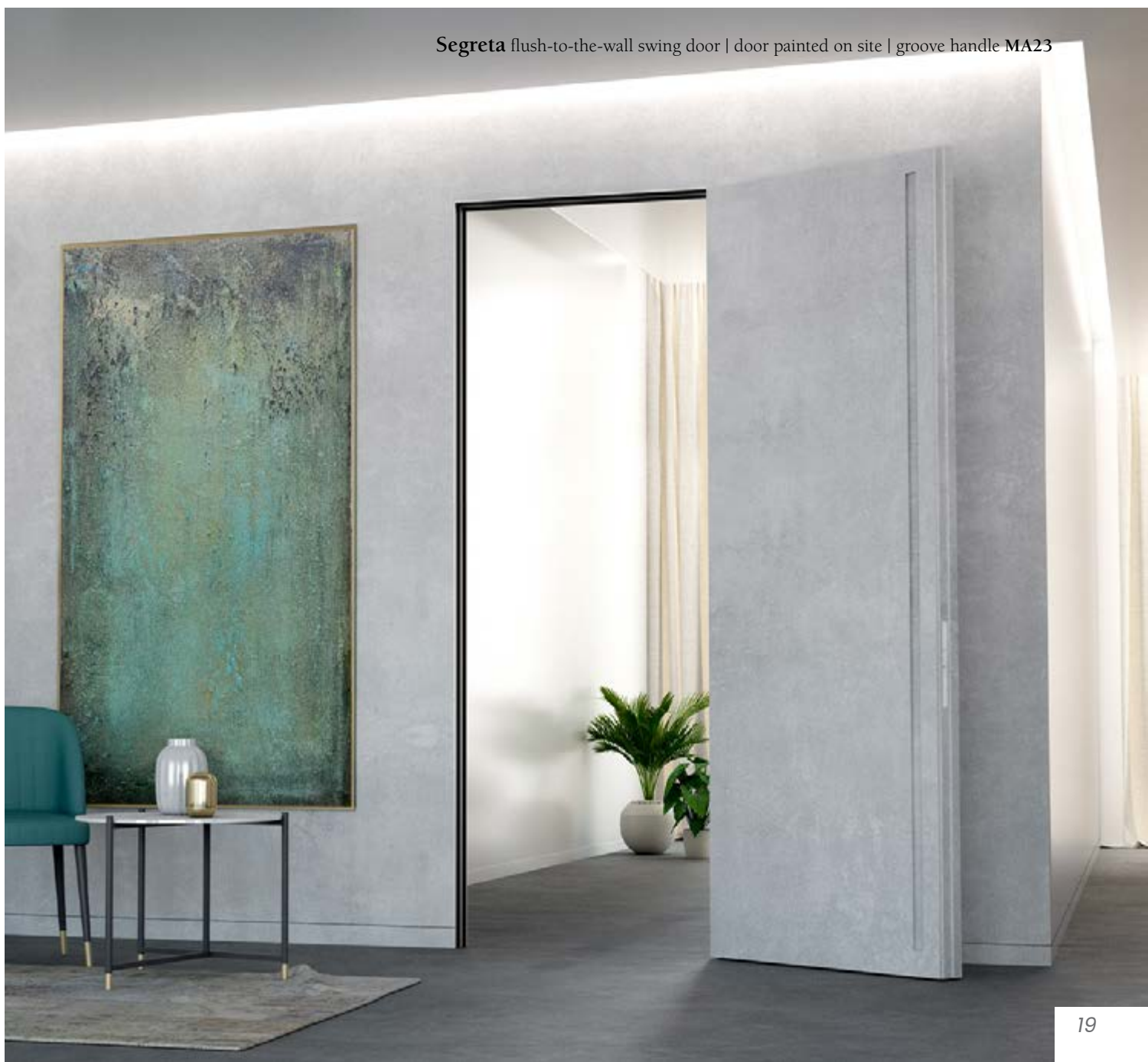
*to make the most of  
the space*

The Segreta double wire swing door allows **180° opening on the wall**, both with push and pull opening; this allows you to make the most of the available passage light.

To ensure the total overlap of the door on the wall we recommend providing one of the special built-in handles available such as the **MA22** and **MA23** groove handles or the **MA13** and **MA15** coplanar handles.



Segreta flush-to-the-wall swing door | door painted on site | groove handle MA23



# Segreta

## *flush-to-the-wall pivot door*

The **pivot version** is made to measure up to 130 x 300 cm h. The oversized standard hardware, with a capacity of over 100 kg, guarantees smooth and silent operation.

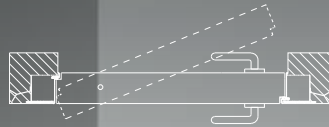
To further increase the comfort of using the Segreta pivot door, you can request the optional "soft closed" closing system which, in addition to having a stop function (allowing you to leave the door open at 90°), gently slows the door during closing.

If you want a door with bidirectional opening, the pivot door is equipped with a special frame without lateral stops, in this way the optional "**soft closed**" system works in both opening directions and guarantees the stop in the 0° and **+/- 90°** opening positions.

Pull version



Push version



**Segreta** flush-to-the-wall pivot door | door painted on site | groove handle MA23



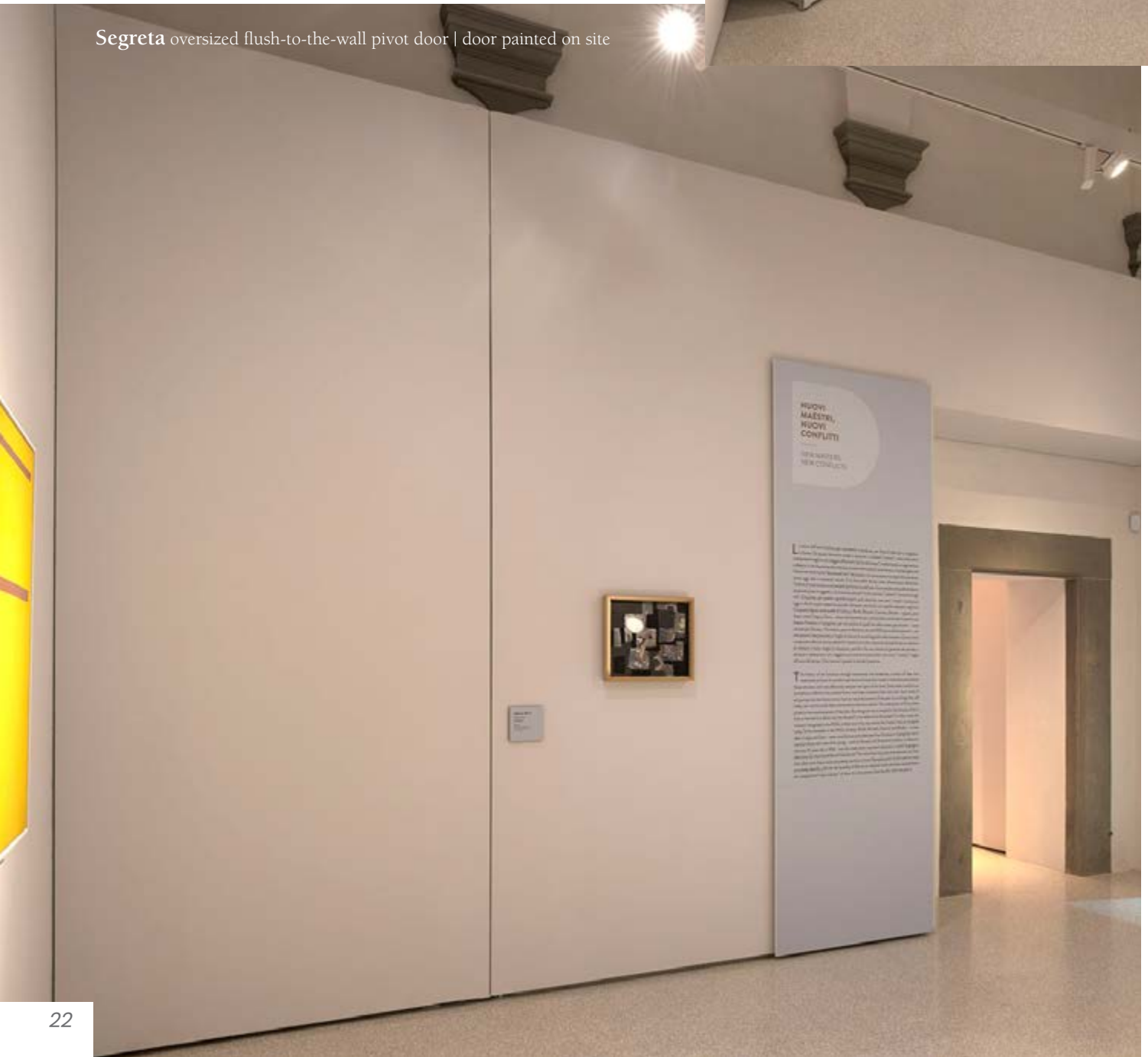
# SPECIAL REINFORCES

*for the best possible flatness*

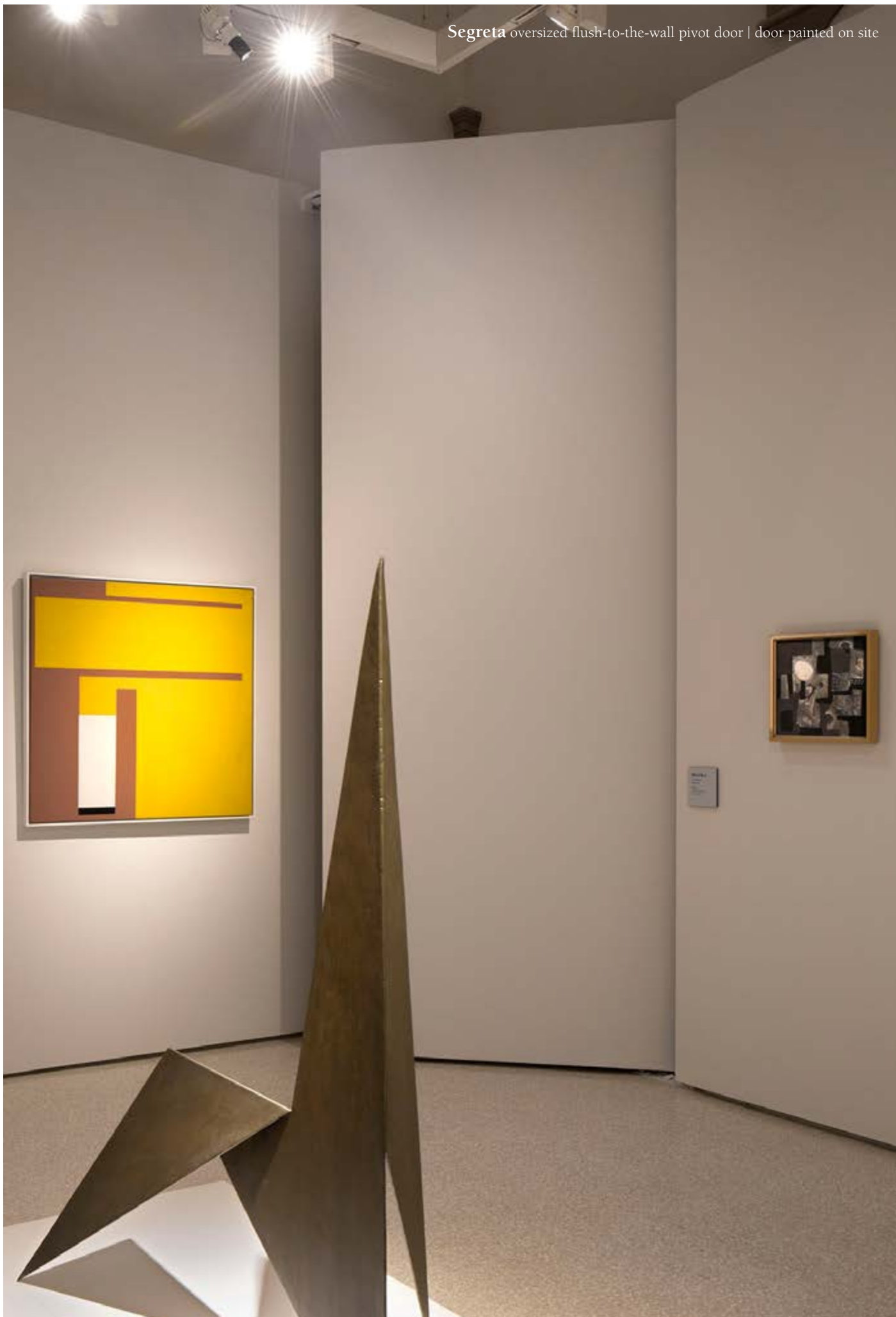
On doors with a height greater than 220 cm, **extruded aluminum reinforcements** are inserted inside the doors to guarantee the best possible flatness.



Segreta oversized flush-to-the-wall pivot door | door painted on site



Segreta oversized flush-to-the-wall pivot door | door painted on site





**Segreta** double sided flush-to-the-wall swing door | door painted on site | groove handle MA23



# Segreta

## *double sided flush-to-the-wall pivot door*

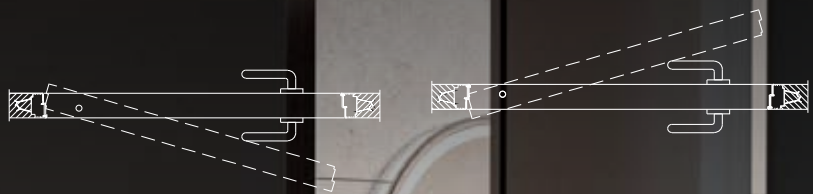
As with the swing version, the **double sided flush-wall swing version** also remains perfectly coplanar to the wall on both sides, both the frame and the door.

They are available in three different thicknesses: 102 mm, 107 mm and 125 mm.

On request, double flush doors can be made in custom thickness.

Pull version

Push version



# SLIDING DOOR SEGRETA

*outside wall*

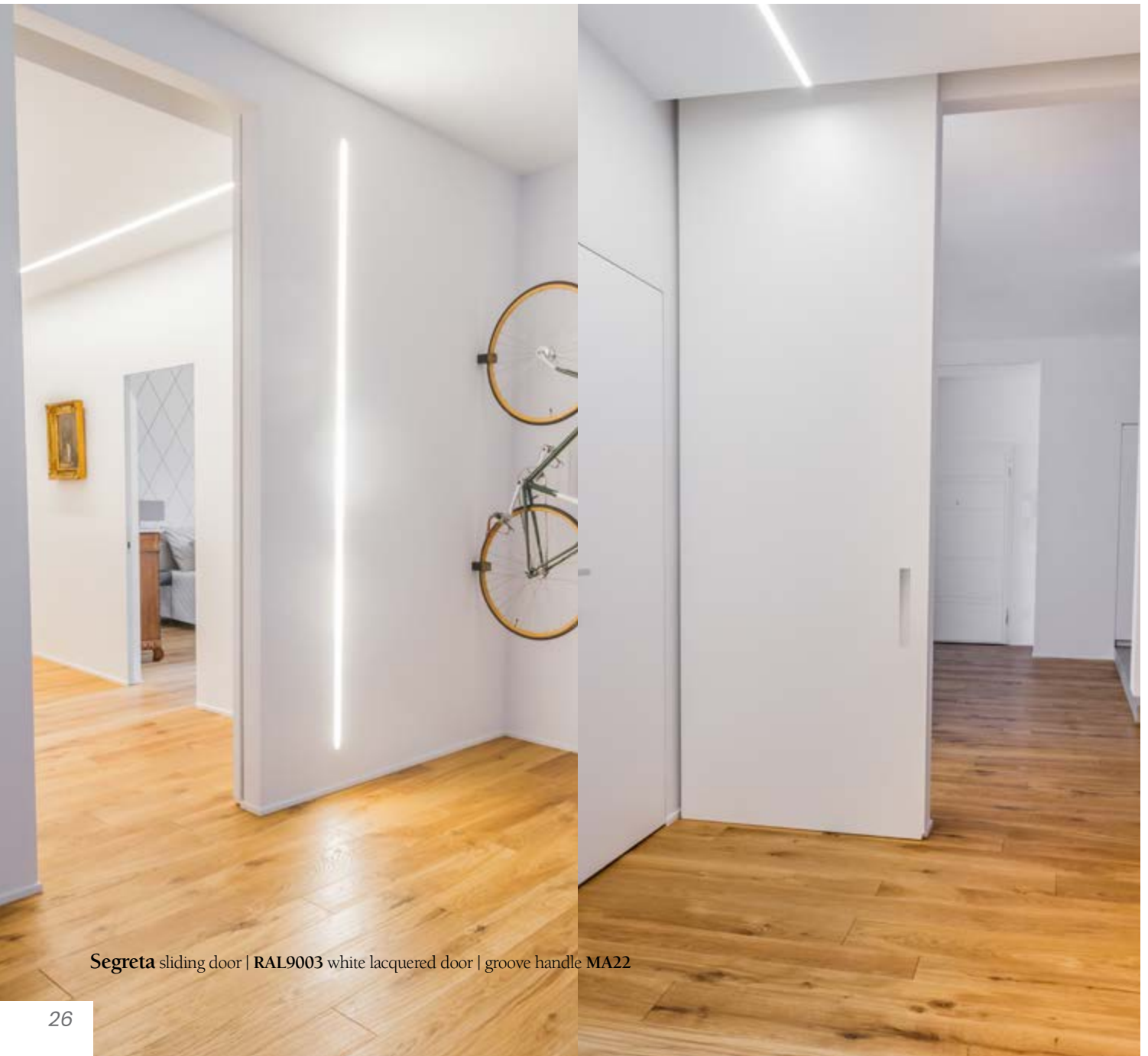


The **external wall** sliding door, made with 1 or more doors, is always made to measure up to 130 x 300 cm h.

The doors can be supplied already lacquered or in a version to be painted.

The **sliding track** can be of the built-in type or in the classic version with covering **valances**.

Also for the sliding «Segreta», various types of optional concealed handles are available such as the **MA22 handle** model in the photo.

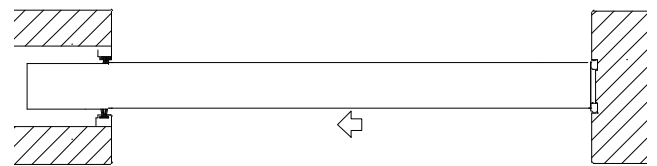


Segreta sliding door | RAL9003 white lacquered door | groove handle MA22



## SLIDING DOOR SEGRETA

*inside wall*



The Segreta door is available in the **internal wall** sliding version and is compatible with all models of counterframes on the market.

The company can supply the **complete door** and **counterframe kit**, or just the prepared door.

Segreta internal wall sliding is equipped with satin chrome (as in the photo) or matt white recessed handles; other types of handles are available on request.

# Segreta-S

*coplanar sliding  
door*

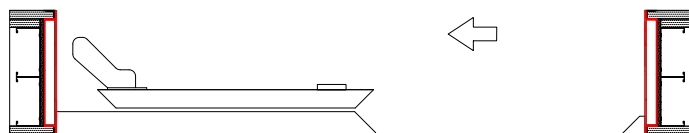
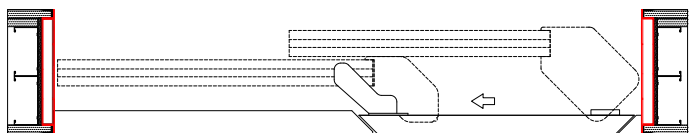
The **Segreta door** is also available in the exclusive coplanar sliding variant "**Segreta-S**", which can be made with one or two sliding doors.

This system provides for a completely mechanical operation and allows the door to be opened with a simple hand pressure, consequently the handle on the side flush with the wall is not provided.

Given the complexity of manufacturing some components and the long times required for production, the coplanar sliding door "**Segreta-S**" is available in a limited number of units.

operation video of  
**Segreta-S** coplanar door





# SLIDING SEGRETA-S

*coplanar to the wall*

The system includes a fixed side door and a sliding one, the fixed panel becomes the wall behind which the opening door slides.

In addition to the two panels (fixed + opening), Segreta-S is equipped with a **special perimeter frame** where, already in the factory, the sliding system is fixed, all **specially designed** to guarantee the **best possible flush-to-the-wall effect**.



Segreta-S | door painted on site

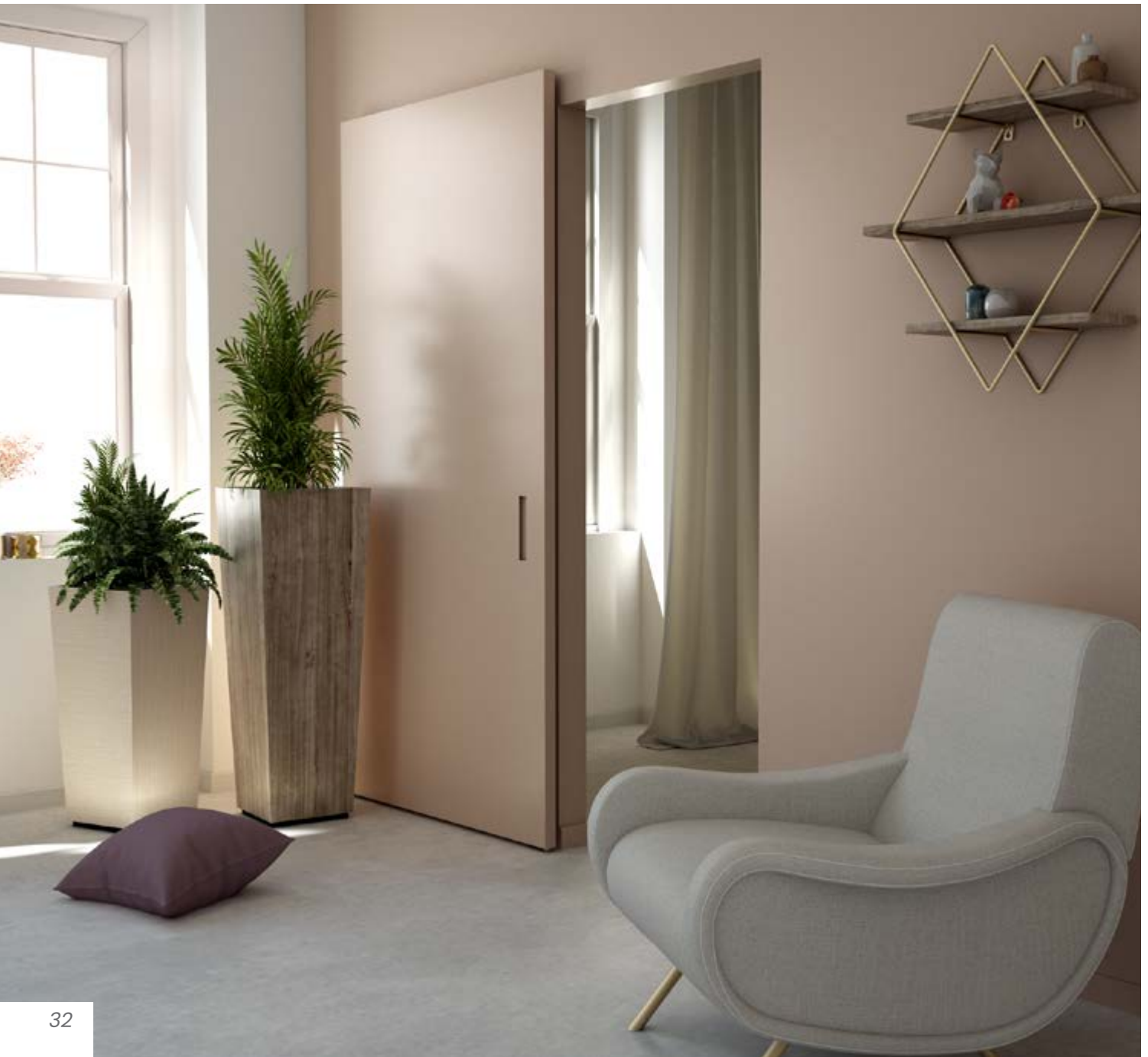
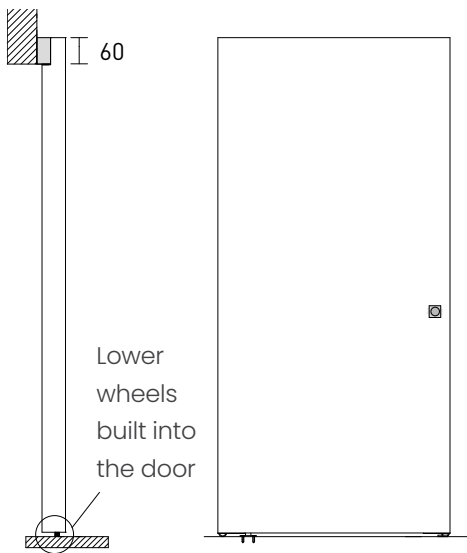


# MAGIC SLIDING SYSTEM

*Invisible sliding system*

Invisible sliding system with **wall attachment**.

The Magic sliding system also uses lower floor wheels, for this feature it is necessary to use this system in the presence of smooth and jointless floors such as, for example, parquet or resins.

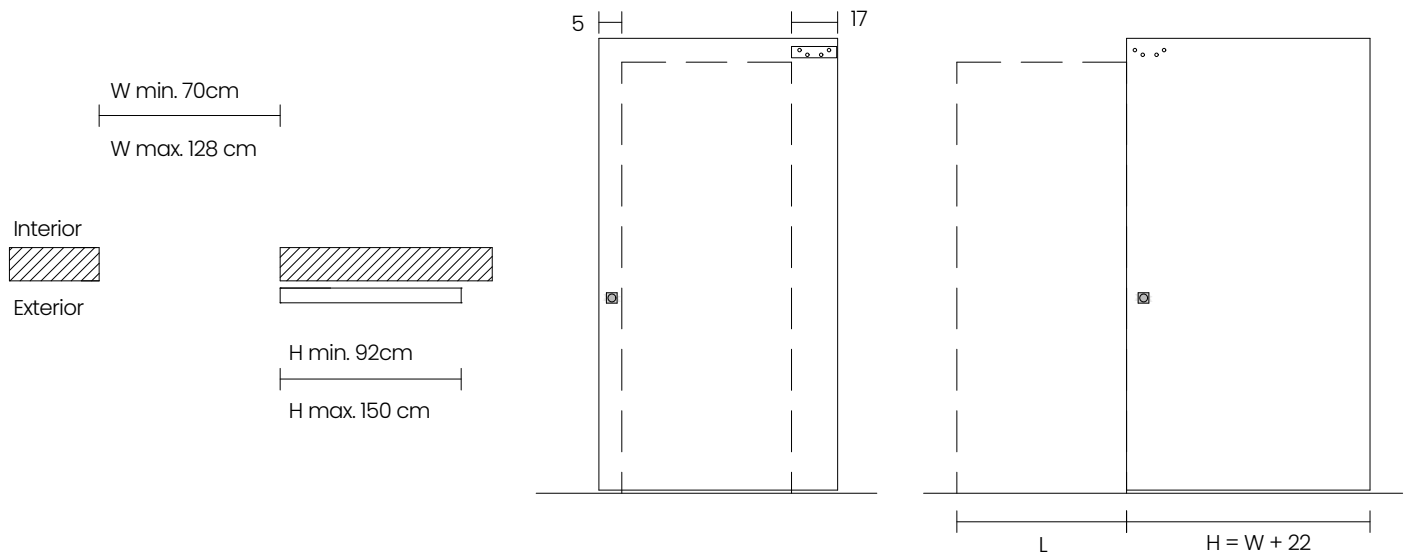




Segreta sliding door | door painted on site | groove handle MA22 | invisible sliding system Magic

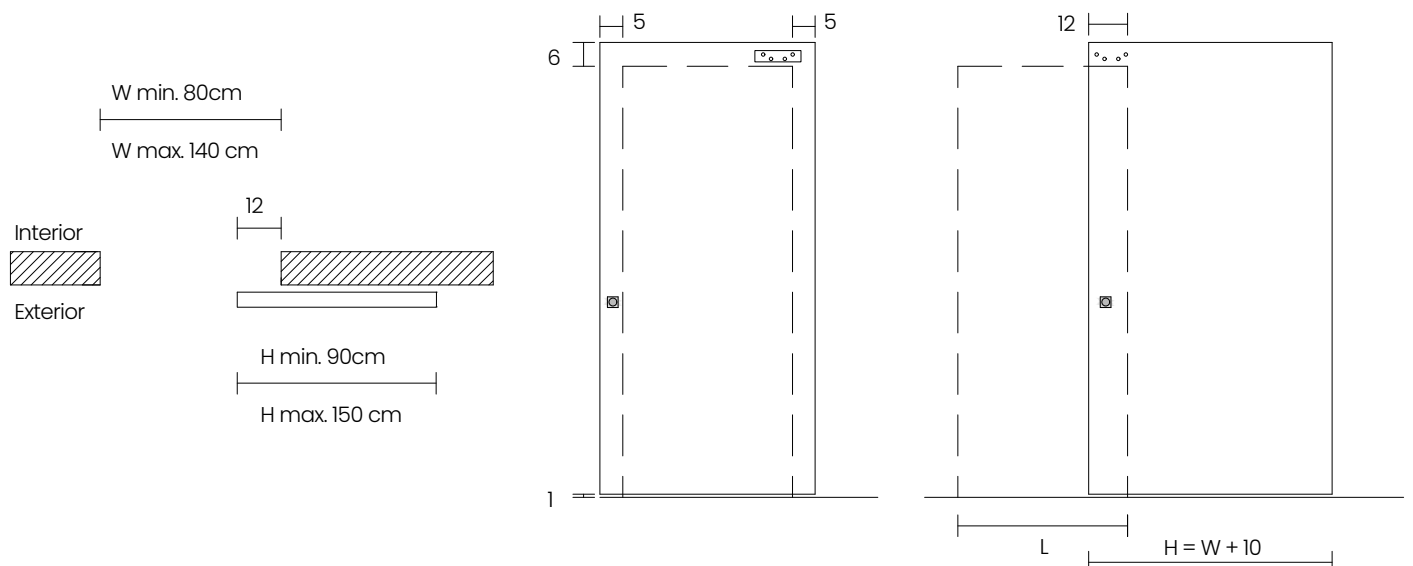


### FREE PASSAGE FROM THE DOOR





**PASSAGE WITH SPACE OCCUPIED BY THE DOOR FOR 12 CM**



XDoor® flush-to-the-wall swing door | door painted on site | groove handle MA23 LED



operation video of  
**MA23 LED handle**



## XDoor<sup>©</sup>

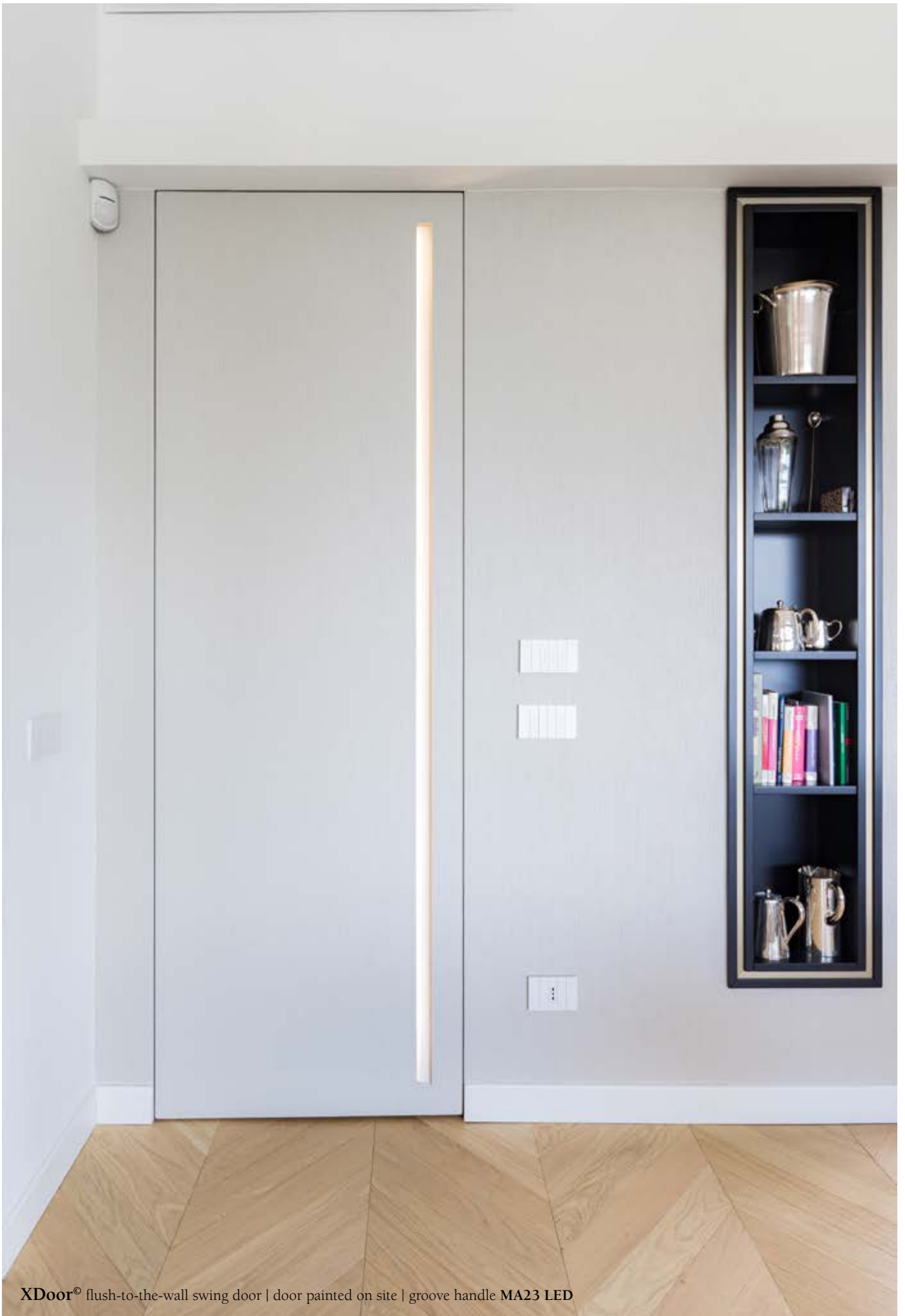
*with integrated light*

The **XDoor**<sup>®</sup> is characterized by the presence of a LED lighting system integrated into the thickness of the door.

The light comes out from a slot inside the **MA23 groove handle**, the closure is entrusted to an adjustable magnet that can also be equipped with an optional privacy lock.

The **XDoor**<sup>®</sup> is a model designed and registered by Dario Staino, produced exclusively by Staino & Staino srl.

The **low consumption LED light** can be adjusted in its intensity via optional dimmer control; the system can be connected to a simple switch or to any home automation system present in the home.



XDoor® flush-to-the-wall swing door | door painted on site | groove handle MA23 LED

XDoor® flush-to-the-wall swing door | door painted on site | groove handle MA23 LED



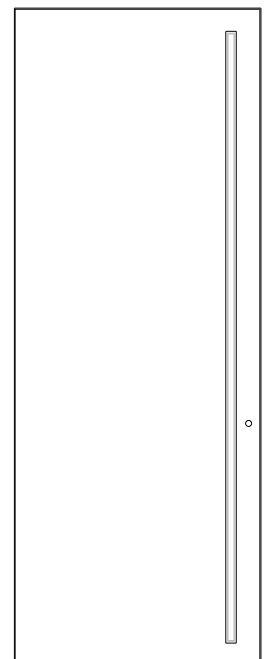
## XDOOR®

*with integrated  
LED light*

The XDoor® is available both on swing and pivot version; made to measure up to 130 x 300 cm h.

The panel can be requested with a protective primer to be painted like the wall, or already lacquered in any matt color on request.

In the photos above you can see the variation in light intensity possible thanks to the **optional dimmer control**.







iDoor® flush-to-the-wall swing door | door painted on site | groove handle MA22i

## iDoor®

*with rounded  
upper edges*

**iDoor®** is the new flush-to-the-wall door model that, thanks to its rounded ends, is characterized by an exclusive design, very clean and minimal but with a decidedly softer, more personal and recognizable taste.

The **iDoor®** is equipped with an extruded aluminum frame that allows the door to be mounted flush with the wall and, thanks to its particular characteristics, allows the masonry to be finished in a coordinated way with respect to the door design.

A series of dedicated handles complete the proposal of this new flush-to-the-wall door.

**iDoor®** is a model designed and registered by Dario Staino, produced exclusively by Staino & Staino srl.



iDoor® flush-to-the-wall swing door | door painted on site | groove handle MA22i



## IDOOR®

*finish coordinated  
with the wall*

The iDoor® is equipped with an extruded aluminum frame that allows the door to be mounted flush with the wall and, thanks to its special features, allows the masonry to be **finished in a coordinated way** with respect to the door design. A series of dedicated handles complete the proposal of this new flush-to-the-wall door.

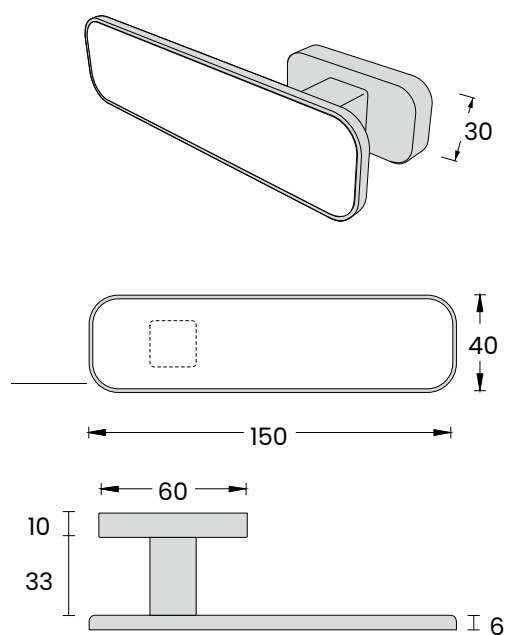
# MANIGLIA IHANDLE®

by Staino&Staino

Specially designed to match iDoor®, the iHandle® is made of solid aluminum.

The handle can be equipped with a **wooden insert** with the same finish as the door, the visible aluminum parts can be in a coordinated finish or in one of the many **contrasting finishes available**.

1,5 mm  
aluminum  
border





iDoor® flush-to-the-wall swing door | door painted on site | iHandle®

iDoor<sup>®</sup>four flush-to-the-wall swing door | door painted on site | embossed handle MA28



# IDOOR<sup>®</sup> four

*special version with frame  
on four sides*

The iDoor<sup>®</sup> is also available in a **special version** with a frame on **four sides**, this variant can be used in cases where the door divides rooms with different floor heights.

Thanks to the presence of the frame on all four sides, the lower ends of the door are also rounded, a feature that further emphasizes the exclusive design of the iDoor<sup>®</sup>.



# PORTFOLIO

*You can see photos of some of our creations  
by clicking the icons*



Segreta oversize-S pivot door | door painted on site



## Design Apartment

A large Easy-S sliding door with a special height of 360 cm in this project designed by Architects Mariella Corsi and Laura Bianchi of ARCHBCSTUDIO ([www.archbcstudio.com](http://www.archbcstudio.com))



## Minimal Apartment

Hinged, sliding and pivot doors from the "Segreta" collection were installed throughout the house according to the instructions of the architect Francesco Moncada. [www.francescomoncada.com](http://www.francescomoncada.com)



## Family House

A modern renovation according to the project of the architects Filippo Cambi and Petula Bolognesi. The typology of the products inserted is very varied: internal doors Segreta, Light, Master and Versus.



## Palazzo Buontalenti

The historic Palazzo is renovated thanks to the project designed by MATTEINI + ASSOCIATES ([www.matteiniassociates.com](http://www.matteiniassociates.com)). Numerous closures made with the Segreta and Segreta double flush door collections.



# Optional profile for the flush-to-the-wall frame extension

*Raw aluminum profile, to be painted like the wall, made to measure with variable depth from 72 to 152 mm.*

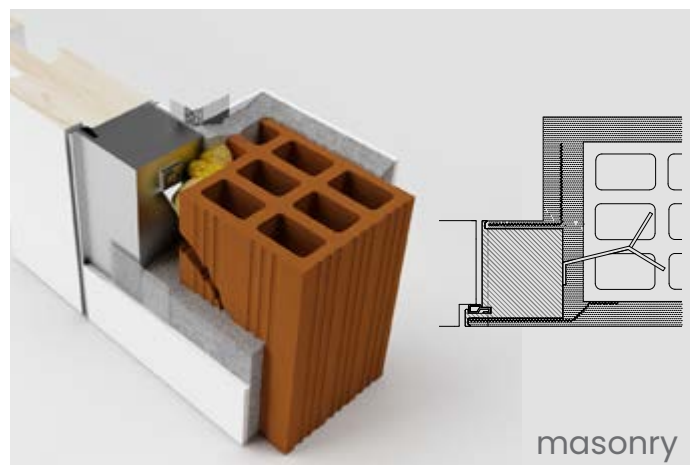
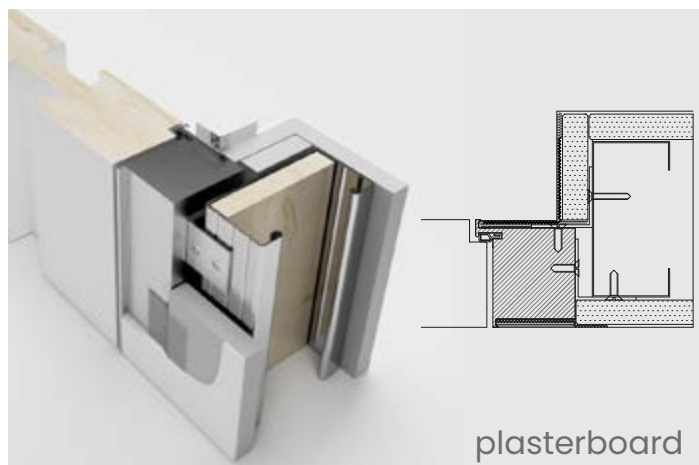
*The use of the optional profile facilitates the finishing of the wall thickness, optimizing work times on site.*



## Flush-to-the-wall frame standard

Standard 53 mm thick flush-wall frame for masonry or plasterboard walls.

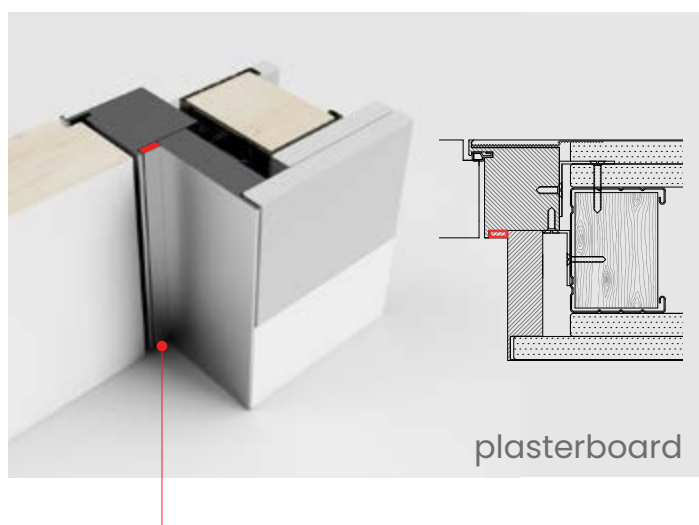
The standard flush-wall frame remains coplanar to the door on two sides and allows both push and pull assembly. For example, the frame with right-hand push opening can also be mounted left-hand pull.



## Flush-to-the-wall frame with optional profile for extension

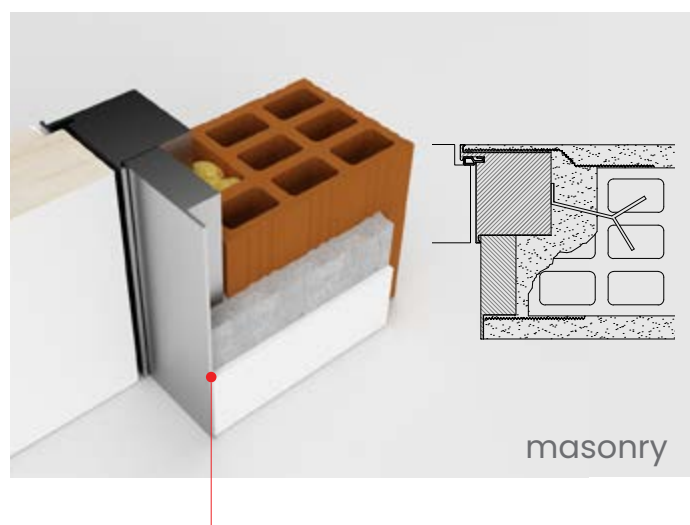
Frame extension for plasterboard and masonry walls made to measure for walls with depths of up to 152 mm.

The use of the optional profile facilitates the finishing of the wall thickness, optimizing work times on site.



### Thickness for skirting board

The optional profile can be positioned at the distance requested by the customer, in relation to the presence of the skirting board and its thickness.



### No thickness

In the absence of skirting boards, the optional profile is fixed to the frame without additional spacers.



Segreta flush-to-the-wall swing door | door painted on site | groove handle MA22

# Built-in Skirting board

In combination with the flush-to-the-wall doors, the system that Staino&Staino has developed for the built-in skirting board made of extruded aluminum is available.

The system is made up of two profiles that can also be purchased separately; the internal profile acts as a "Template" and must be fixed to the wall before plastering, subsequently it will be possible to apply the finishing skirting board profile that will be positioned inside the "Template" profile. The external skirting board profile is available in numerous variants.

The standard "anodized satin silver" finish is also ideal for those who want to paint or resin the skirting board.

The advantage of using a skirting board made of extruded aluminum is mainly that of having a product that is not afraid of humidity and contact with water or with detergents normally used for cleaning the floor.

The optional finishes are as follows: "anodized bronze PA05" or powder coated in the finishes "PA 09 Corten", "PA 11 Dark Bronze", "PA 13 Sandblasted Iron Grey"; alternatively, it is possible to request painting in a matt RAL colour of your choice.



## OPTIONAL PROCESSING

*for recessed  
skirting boards*

It is possible to request the preparation for the built-in skirting board on the Segreta door frames. The processes are made to measure based on the technical characteristics of the customer's skirting board.



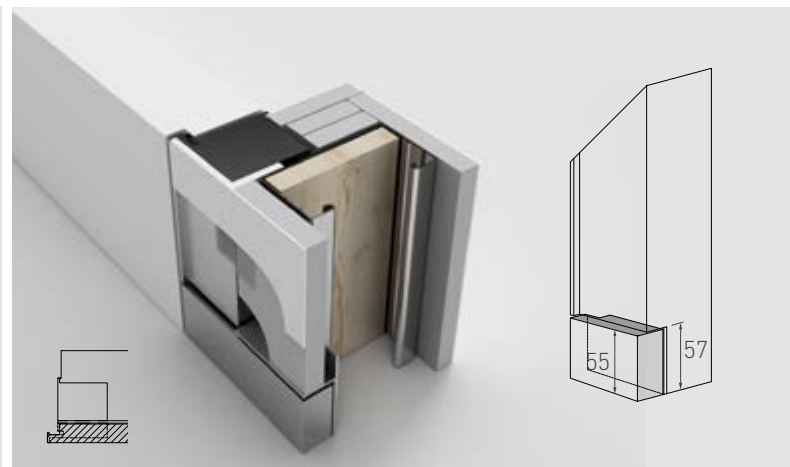
Segreta flush-to-the-wall swing door | door painted on site | coplanar handle MA13

# Built-in skirting board

*push version*

The frame can be prepared to accommodate the built-in skirting board; the process consists of a special milling that allows the skirting board to be installed also in correspondence with the frame.

The processing measurements are calculated based on the characteristics of the skirting board indicated by the customer. On the push side, the skirting board must be lowered in the rebate area.

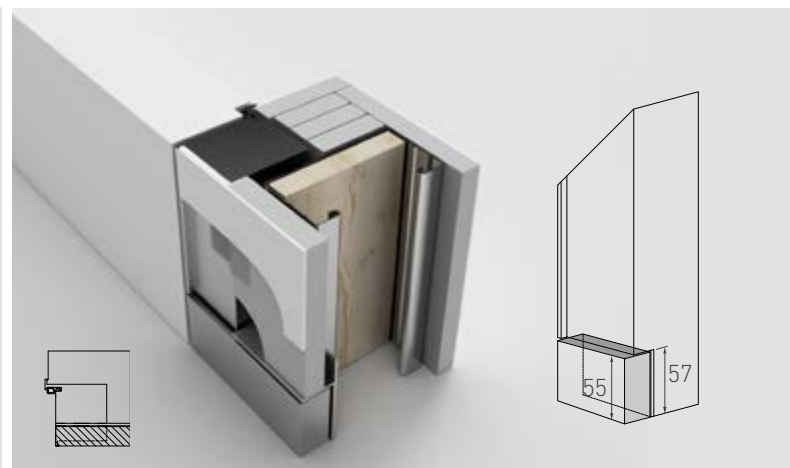
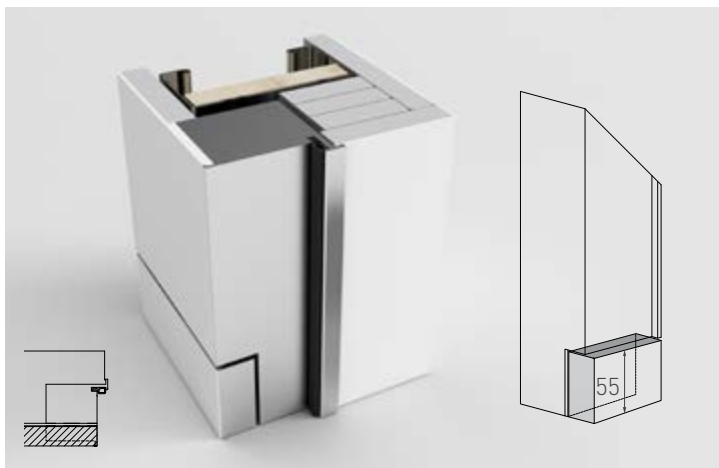


# Built-in skirting board

*pull version*

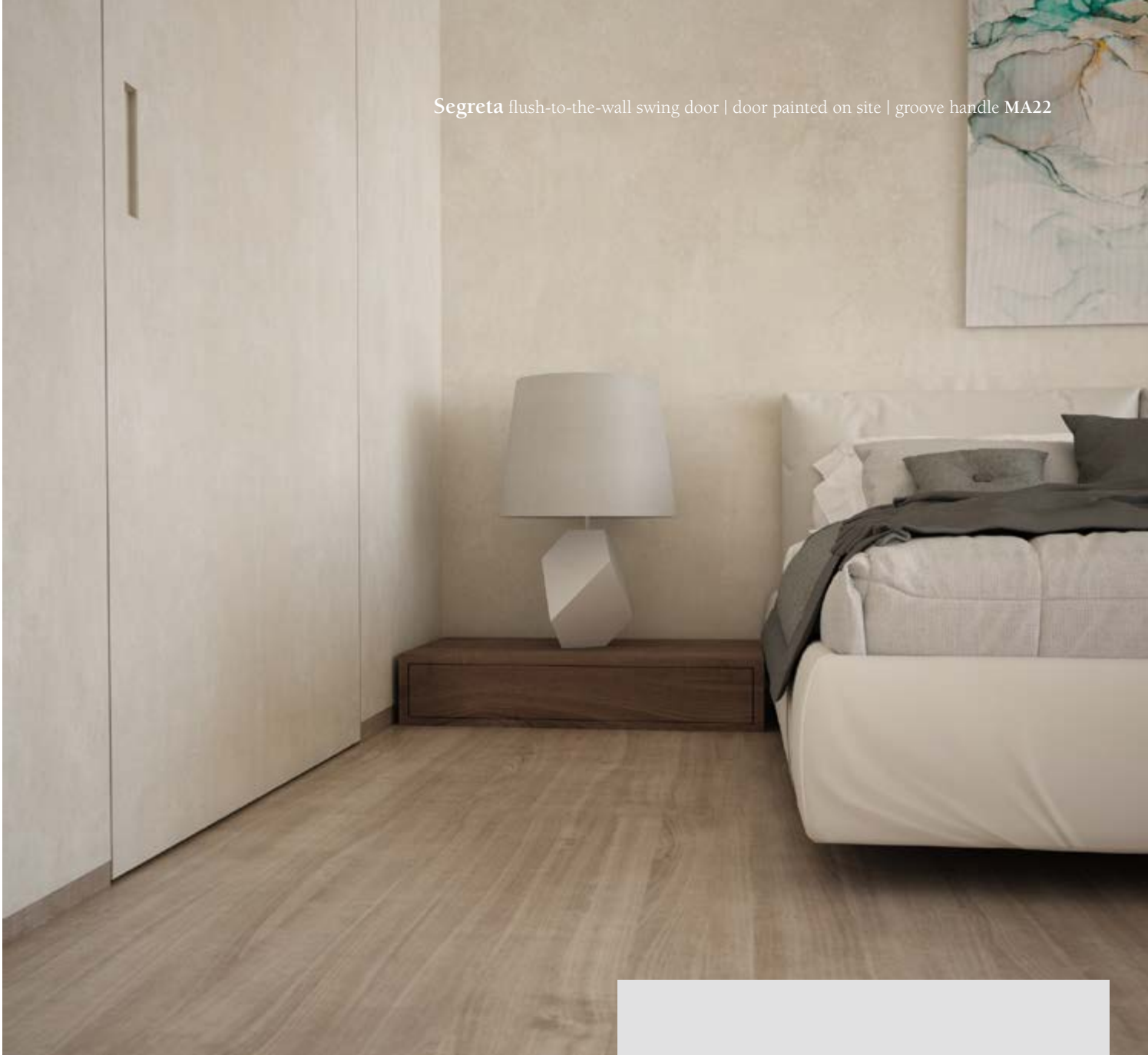
Detail of workmanship on a door with a pull opening.

The height of the skirting board depicted (55mm) refers to the aluminum profile that can be supplied by the company; the size of the workmanship can be varied in relation to the size of the skirting board chosen by the customer.





Segreta flush-to-the-wall swing door | door painted on site | groove handle MA22



## HUNDREDS OF CUSTOMIZATIONS

*on customer's request*

The company can prepare the frames flush with the wall so that they can receive the recessed skirting board according to the specifications requested by the customer.

The recessed skirting board profile produced by Staino&Staino is also available.



# Handles

*Data sheets and  
operation videos*



**Segreta** flush-to-the-wall swing door | **custom finish** lacquered door | **Revolution**<sup>®</sup> handle

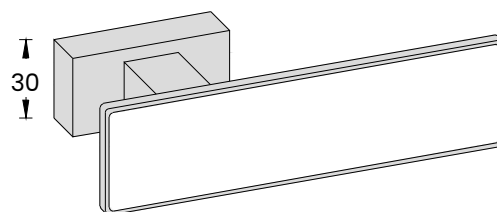
# REVOLUTION<sup>®</sup> HANDLE

by *Staino&Staino*

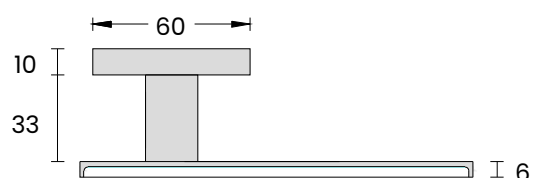
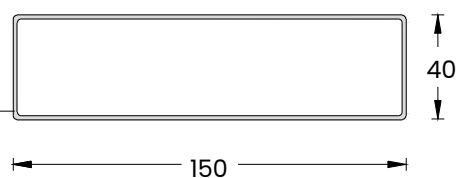
Revolution<sup>®</sup> handle in solid aluminum, in a finish coordinated with the door profiles.

Available versions:

- full aluminum handle, without insert
- handle with insert in matt lacquered MDF
- handle with insert in glossy or satin lacquered glass
- privacy latch in satin or glossy chrome



1,5 mm  
aluminum  
border



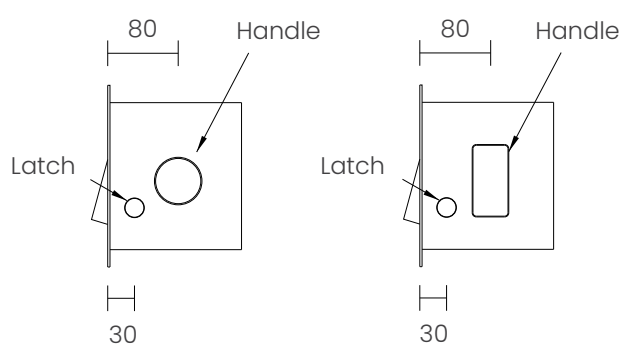
click on the icon if you want to see our  
**Revolution<sup>®</sup>** handle's operation  
video



# COPLANAR HANDLE

## MA13

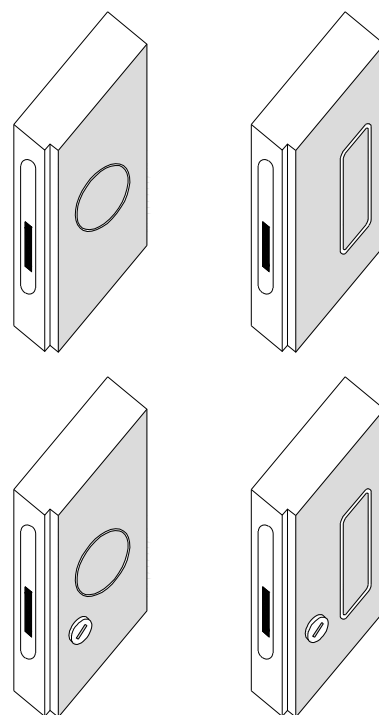
The **MA13 coplanar handle** is available in all materials provided for the door. It is also possible to have the complete lock system with hermetic closure through or only from the inside.

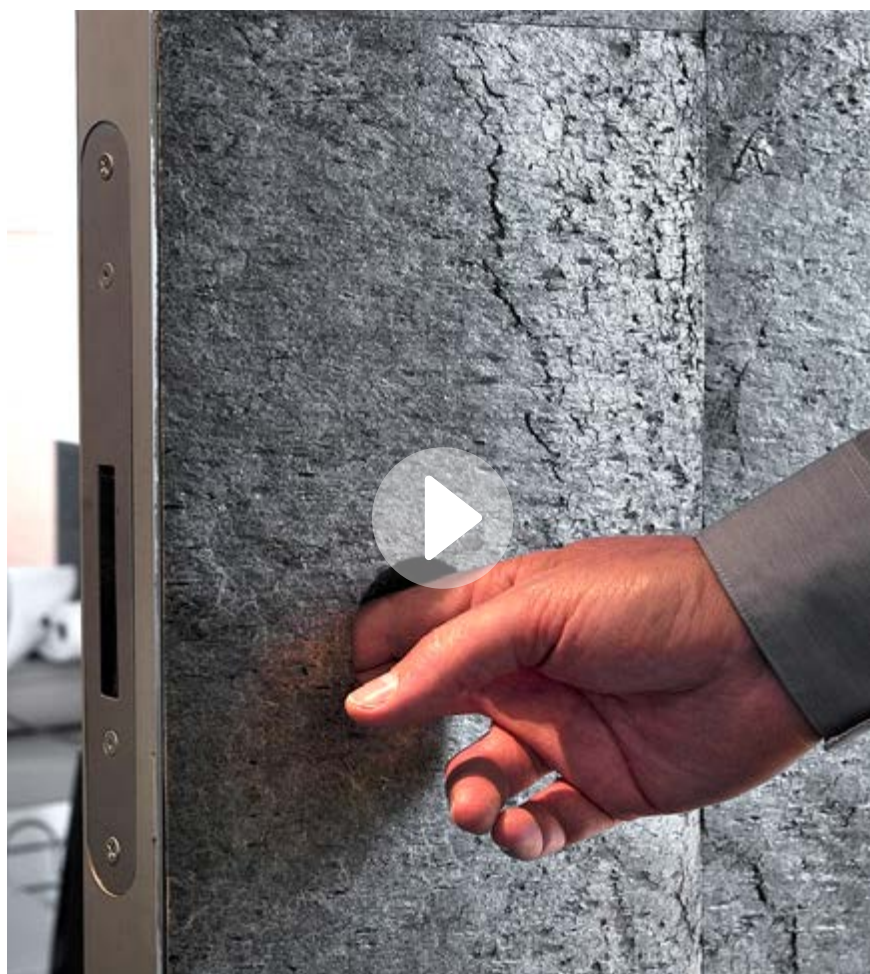


MA13 ø mm 50 on Segreta door cm 80 x210

MA13 mm 43 x 80 on Segreta door cm 80 x210

Round diameter 50 mm. Rectangular 43 x 85 mm H.  
With or without latch (not available with key)





click the icon to see the **video** of the operation of the **MA13** coplanar handle

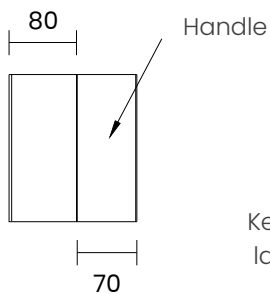
# COPLANAR HANDLE

## MA15

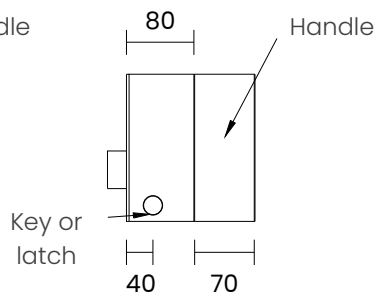
The **MA15 coplanar handle** is available in two different lengths.

The cover is made of all the materials provided for the door and hides the internal groove of the door as soon as the hand is withdrawn with a soft and silent movement.

Without lock

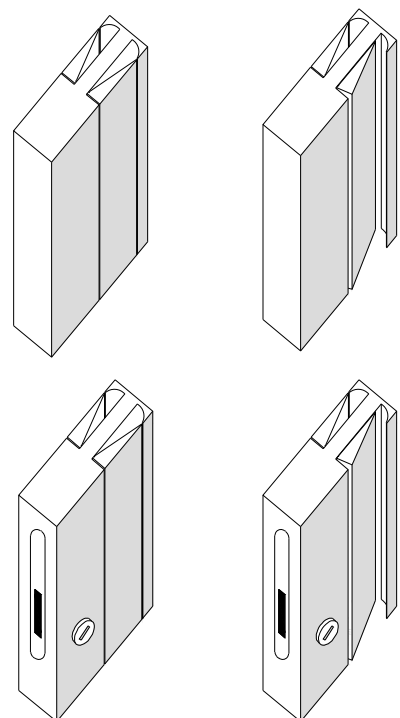
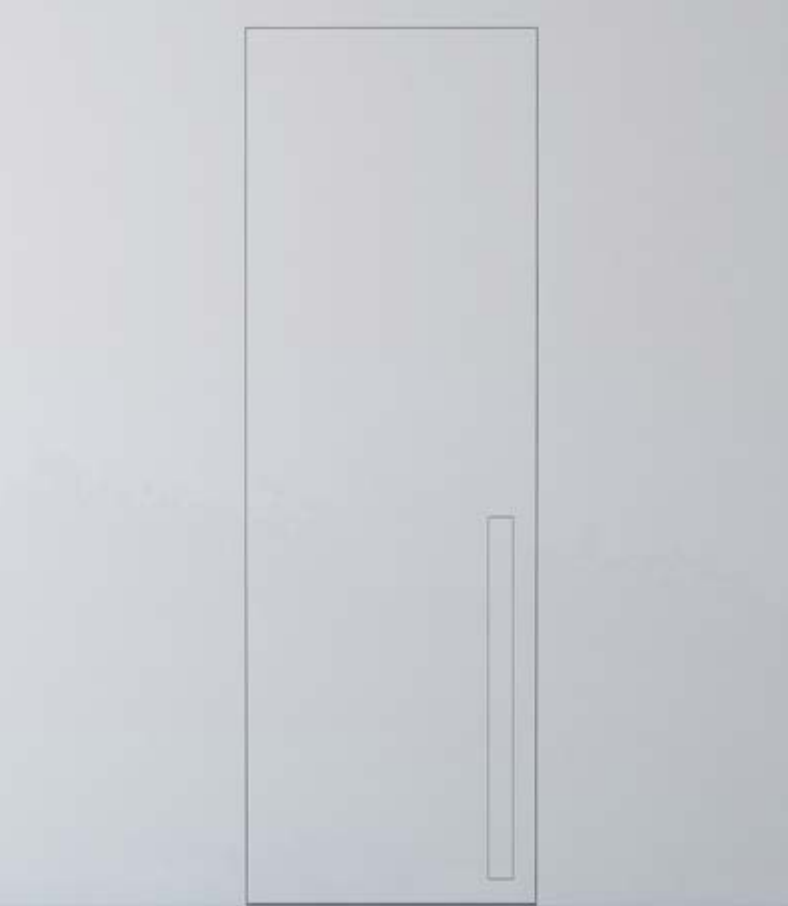


With lock



MA15 h mm 300 on Segreta door cm 80 x240

MA15 h mm 1000 on Segreta door cm 80 x240





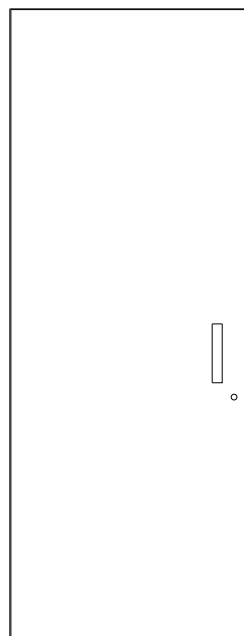
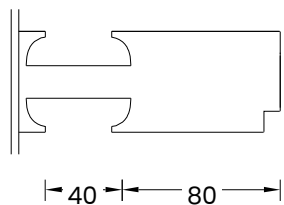
click the icon to see the **video** of the operation of the **MA15** coplanar handle

# GROOVE HANDLE

## MA22

**Pair of MA22 handles** measuring 40 x 200 mm H: the simplest combination for the Segreta door.

On request, it is possible to add the privacy lock or the lock with key.



MA22 h mm 40 x 200 on Segreta door cm 80 x210

MA23 mm 40 on Segreta door cm 80 x210

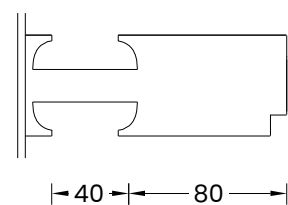
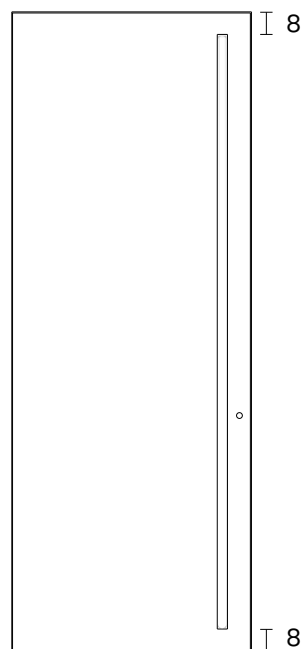


# GROOVE HANDLE

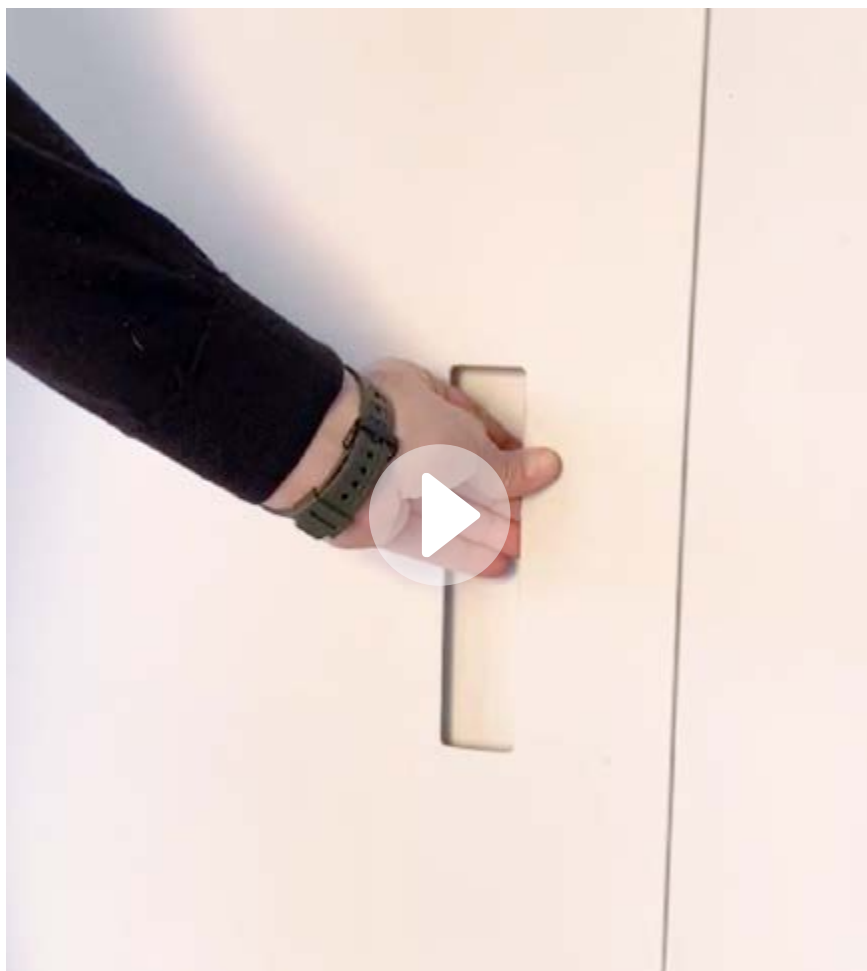
## MA23

**Pair of 40mm MA23 long groove handles** on both sides.

On request, it is possible to add the privacy lock or the lock with key.







click the icon to see the **video** of the operation of the **MA22** groove handle

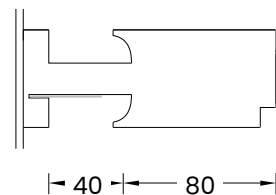
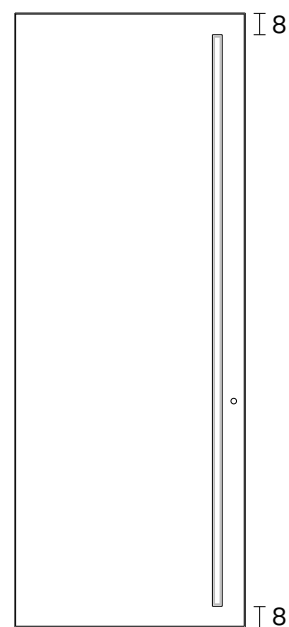
# HANDLE WITH INTEGRATED LED

The light comes out from a slot inside the MA23 groove handle, the closure is entrusted to an adjustable magnet that can also be equipped with an optional privacy lock.

Possibility of installing a **LED light** (3000K) inside the MA23 groove handle only on the external side; 12 V electrical contact is included on the hinge side.

All the accessories for the LED light can also be supplied by your electrician:

- Electronic transformer 60W 24 Vdc ip 20.
- Dimer control (art. DRV 8105)



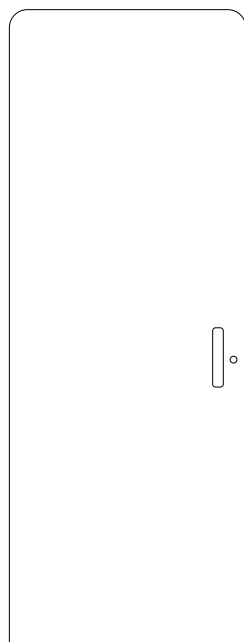
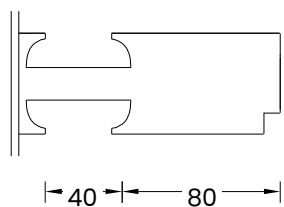


click the icon to see the **video** of the operation of the **MA23 LED** groove handle

# GROOVE HANDLE

## MA22i

**Pair of MA22i handles** with slightly rounded corners 40 x 200 mm H: the simplest combination for the Segreta door. On request, it is possible to add the privacy lock or the lock with key.

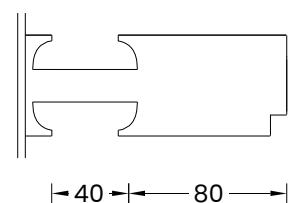
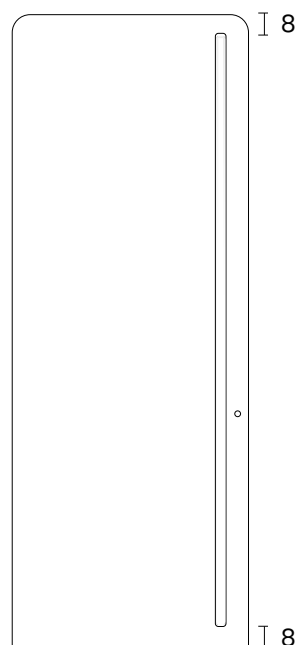


# GROOVE HANDLE

## MA23i

**Pair of 40mm MA23i long groove handles** with slightly rounded corners on both sides.

On request, it is possible to add the privacy lock or the lock with key.

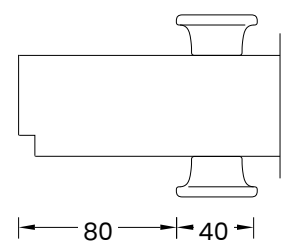
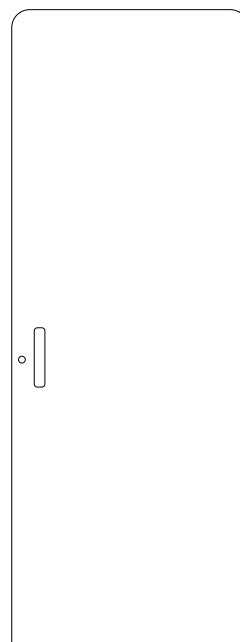


# EMBOSED HANDLE

## MA28

The **MA28** mm 40 x 200 H fixed handle is made in a finish coordinated with the door and is already assembled in the factory.

On request, it is possible to add the privacy lock or the lock with key.

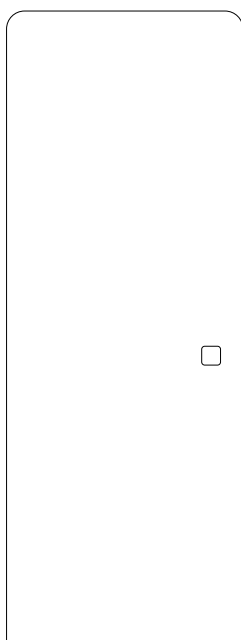
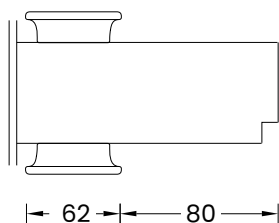


# EMBOSED HANDLE

## MA30

The **MA30** mm 62x62 H fixed handle is discreet and comfortable, is made in a finish coordinated with the door and is already assembled in the factory.

On request, it is possible to add the privacy lock or the lock with key.

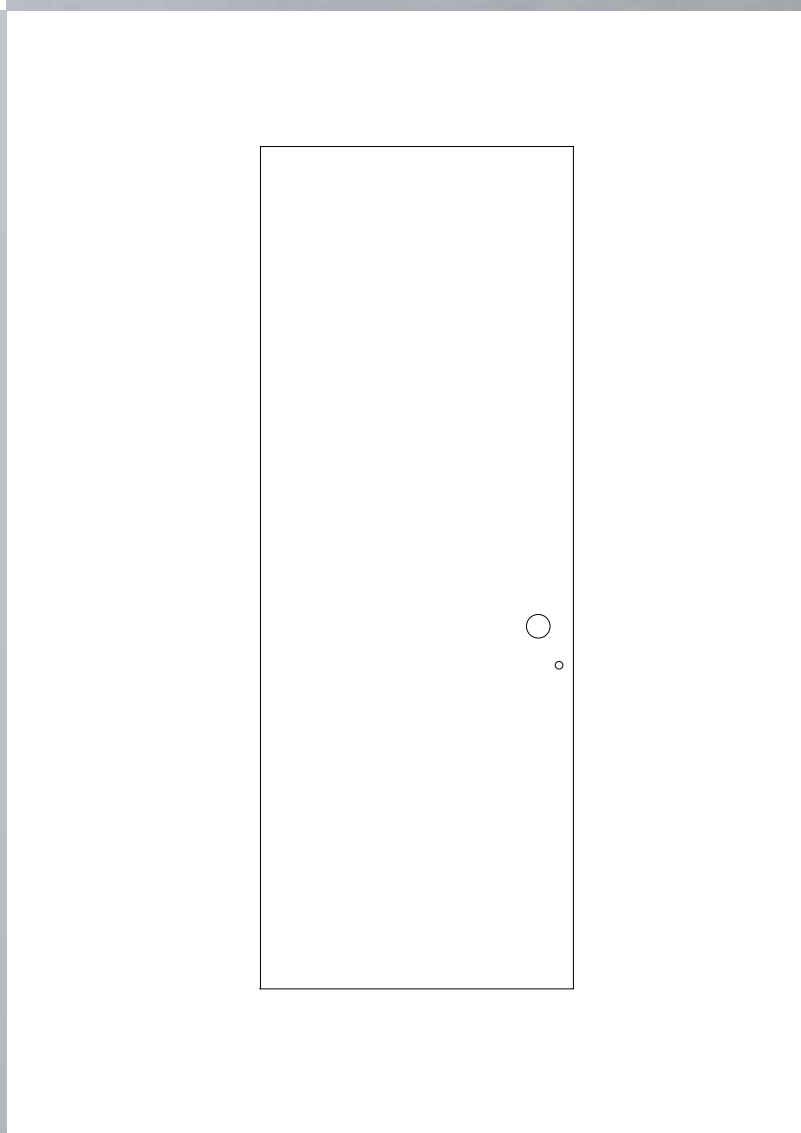
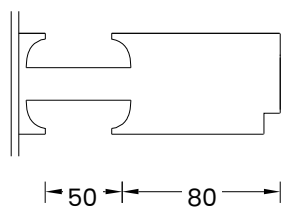


# GROOVE HANDLE MA31

**Pair of circular MA31 handles** with a diameter of 50 mm.

Excellent both in combination with the Segreta door and with the exclusive iDoor® with rounded edges.

On request, it is possible to add the privacy lock or the lock with key.

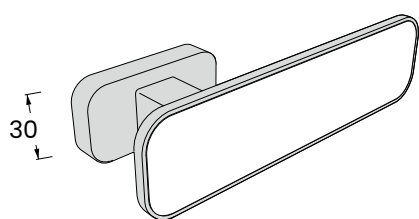


# SPECIAL iHANDLE<sup>©</sup>

by Staino&Staino

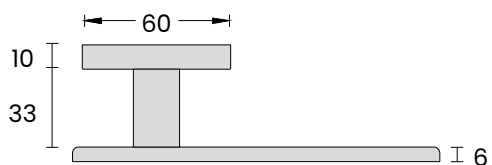
Specially designed to match the iDoor<sup>®</sup>, the iHandle<sup>®</sup> is made of solid aluminum.

The handle can be equipped with a wooden insert with the same finish as the door, the visible aluminum parts can be in a coordinated finish or in one of the many contrasting finishes available.



30

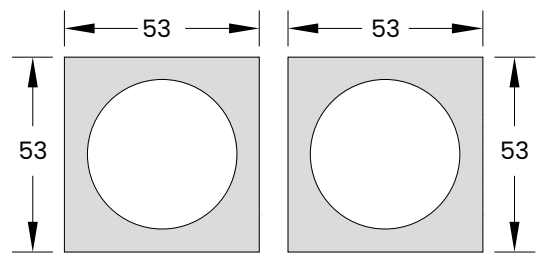
1,5 mm  
aluminum  
border



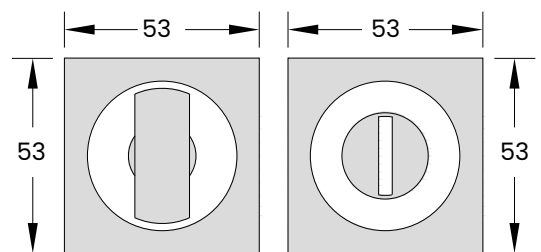
# NICHES & LATCH

## MA03

Pair of recessed square niches with latch.  
Satin or polished chrome privacy latch.



Standard niches.  
Satin or polished chrome.



Niches with optional privacy latch and door lock.



# CONVENTIONAL HANDLES



**LONDON** matte black



**OVAL** satin silver



**OVAL** matte black



**QUADRA**



**CONO**



**SIRIO**



**ALEXANDRA** by Olivari  
design Ferdinand A. Porsche



**TOTAL** by Olivari  
design Rodolfo Dordoni



**CONCAL** by Olivari  
design Patricia Urquiola



Segreta swing panels | doors with custom wallpaper | groove handle MA22 and knob with retractable handle



# Segreta closures

*invisible closures for cabinets  
and technical compartments*

For the creation of invisible closures, we have developed the **Segreta closures Collection**, always made to measure with technical guarantees that allow the best camouflage with the wall.

Thanks to the exclusive **frame** made of **extruded aluminum**, the Segreta Door can be mounted flush with the wall, both on plasterboard walls and on brick walls.

As standard, the door is equipped with a **push/open pressure opening system**, thanks to this system, the handle is not necessary.

The doors are always **made to measure**, with a single door, double door or with multiple doors, optional systems are also available to allow the door to open upwards, downwards or in the special sliding book version.

Segreta swing panels | doors with custom wallpaper | groove handle **MA22** and knob with retractable handle



click on the icon to see the operation  
**video** of groove handle **MA22**



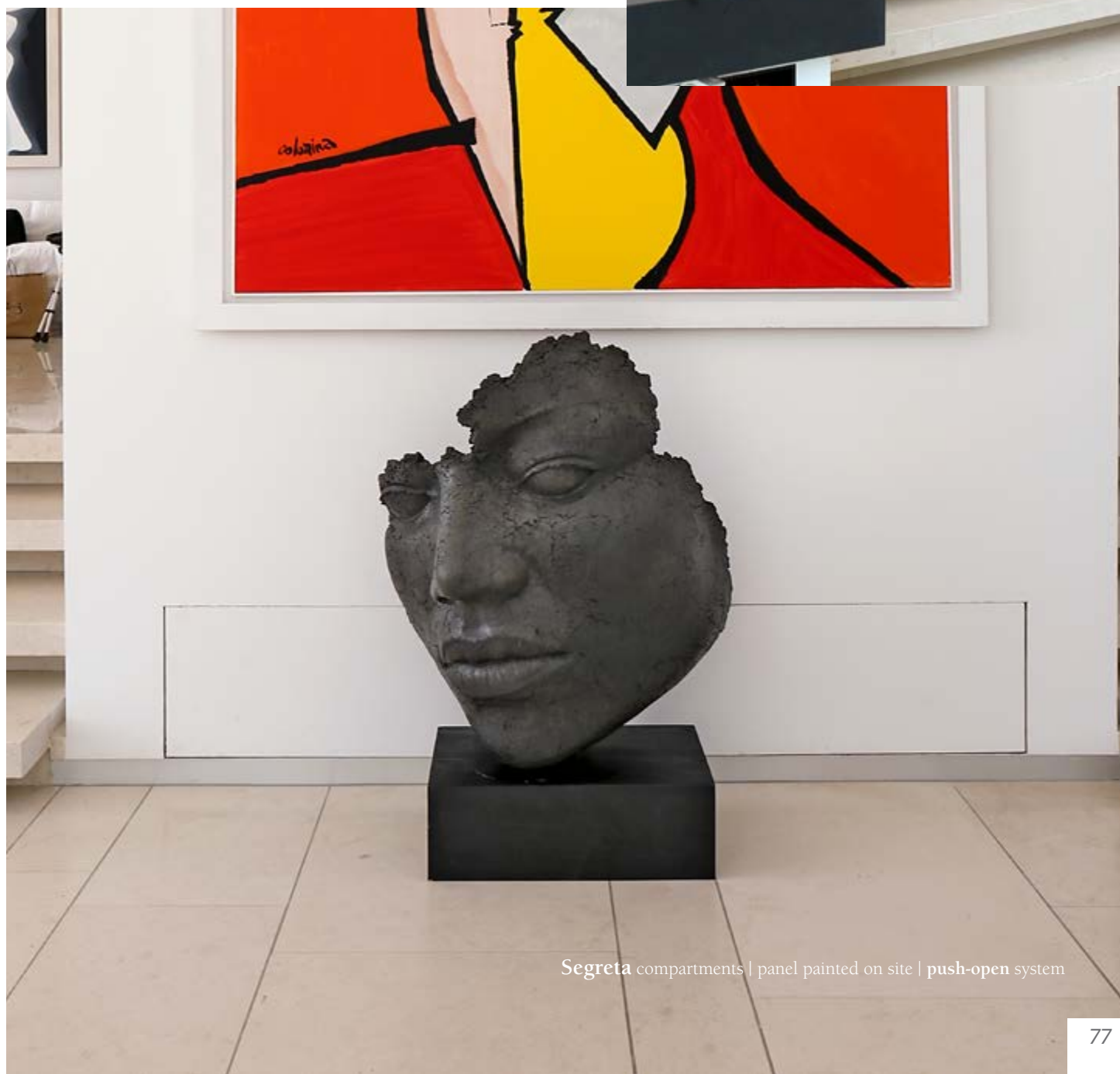
PERFECT  
CAMOUFLAGE

# INVISIBLE COMPARTMENTS

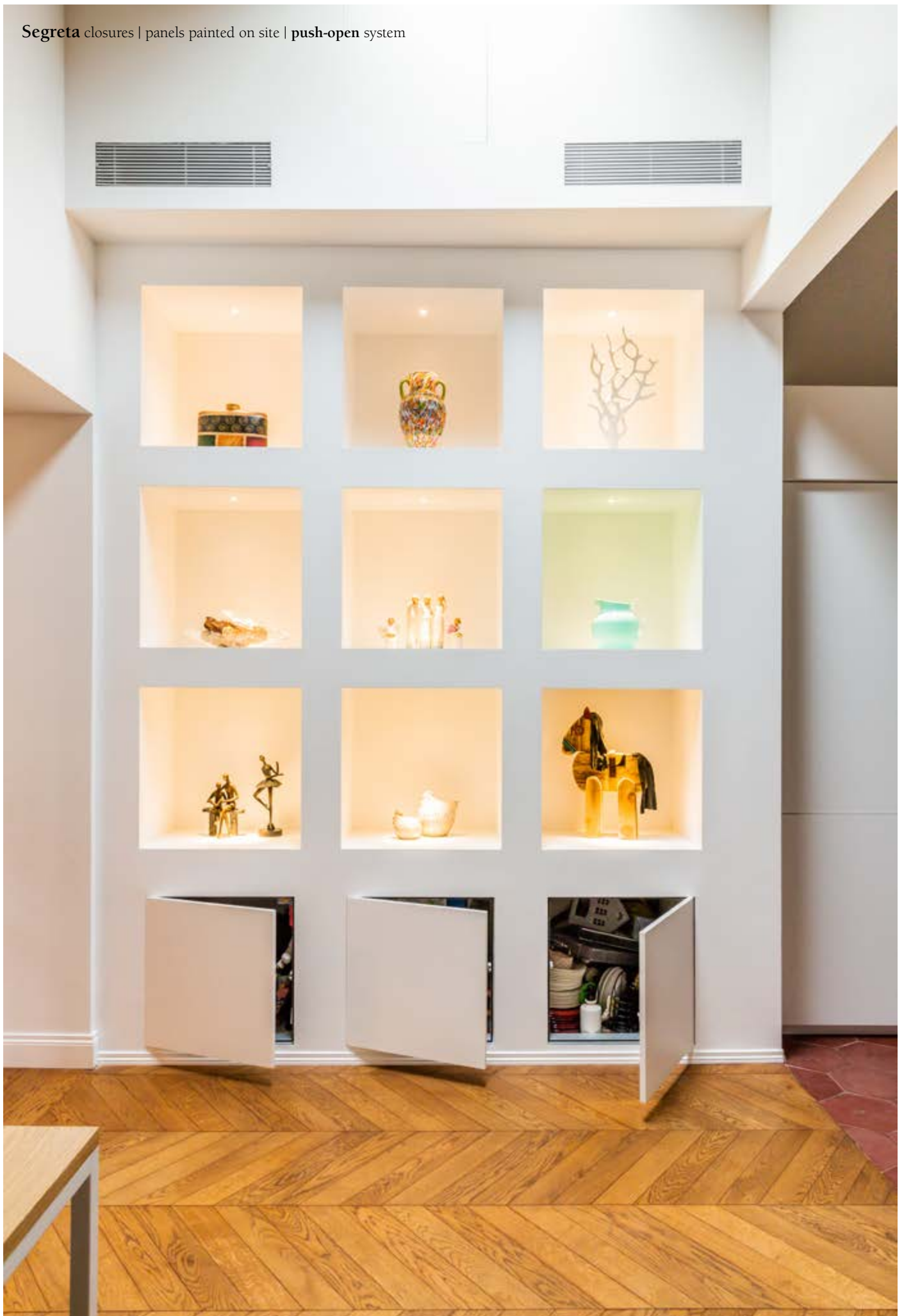
*already assembled*

The compartment is made to measure to the millimeter, it arrives at its destination already fully assembled. The panel is made with a thickness of 19 mm or 28 mm, this allows to maintain a perfect planarity even in large dimensions.

The door can be whitewashed or covered with wallpaper, the invisible effect is guaranteed.



Segreta closures | panels painted on site | push-open system

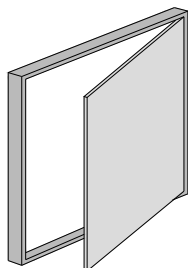


# CLOSURES MADE TO MEASURE

*to the millimeters*

Book openings can be inserted in multi-door versions.

Standard handle for special book doors: 30x30 mm recessed removable knob.



**Segreta** cabinet with book opening | panels painted on site | **knobs** with retractable handle



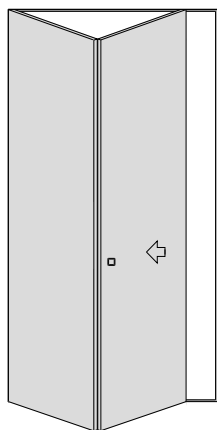


# SPECIAL CABINETS

## *book openings*

Book openings can be inserted in multi-door versions.

Standard handle for special book doors: 30 x 30 mm recessed removable knob



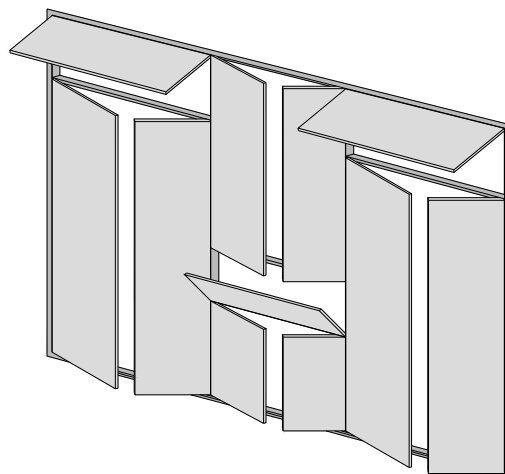


Segreta compartments | panels painted on site | push-open system

# MULTIDOOR FLUSH-TO-THE-WALL

## *multiple closures*

Multiple closures can be created with doors coupled both horizontally and vertically; the type of openings provided can vary (single doors, double doors, with vertical opening or sliding book-style doors).



# PORTFOLIO

*You can see photos of some of our creations  
by clicking the icons*



Segreta compartments | panels painted on site | push-open system

# Sportelli Segreta

Flush-to-the-wall doors from the Segreta collection.  
The Segreta doors were inserted into a plasterboard  
bookcase.

The surface finish is the same as the bookcase.



# Tropical Design

Doors and service hatches from the Segreta collection  
with a tropical-themed surface finish that makes the  
doors and hatches practically invisible.



# Multiple door Segreta

Multiple closures can be created with doors coupled  
both horizontally and vertically; the type of openings  
provided can vary (single doors, double doors, with  
vertical opening or sliding book-style doors).



# Sea House

Master Doors with customized concealed locks and  
glass made in sample color.

Numerous other invisible locks are from the Segreta  
Collection.



# Data sheet

## Swing door

### SWING DOOR

Door complete with flush-fitting frame in satin silver aluminium for brick or plasterboard walls, lock with standard magnetic latch for Patent key or privacy latch and adjustable concealed hinges.

Standard flush-to-the-wall frame, in satin silver aluminium compatible for masonry or plasterboard walls.

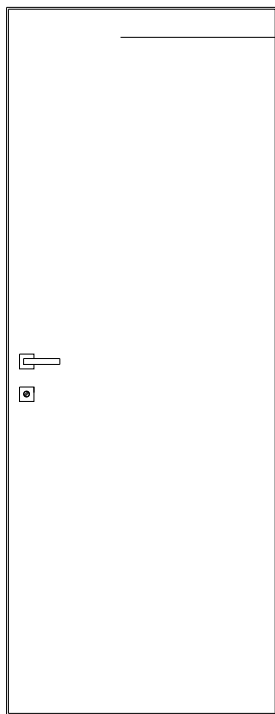
The frame can be mounted by pulling or pushing.

Example: Right-handed to pull = Left-handed to push.

### STANDARD REFERENCE MEASURES

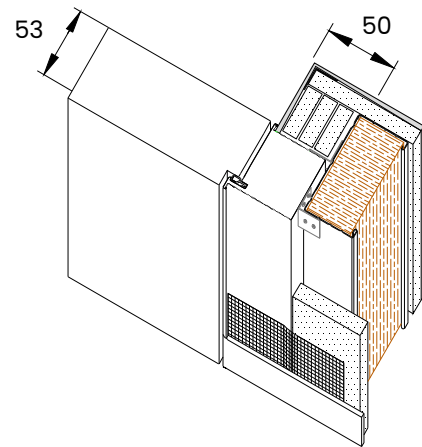
External frame: cm 70/80/90 x 215 H

Net passage: cm 60/70/80 x 210 H

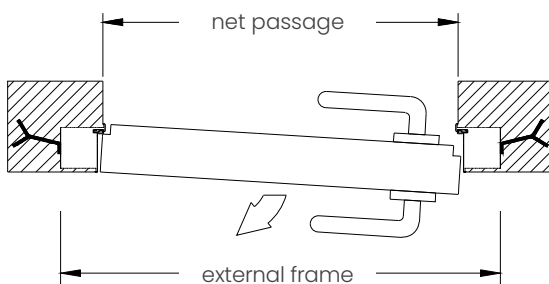


53 mm thick honeycomb door, covered in MDF.

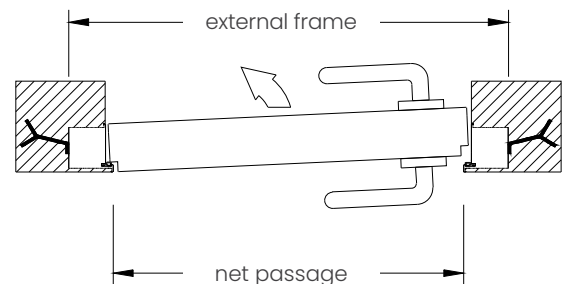
For sizes greater than 220 cm in H, the inside of the door is stiffened by aluminum reinforcements.

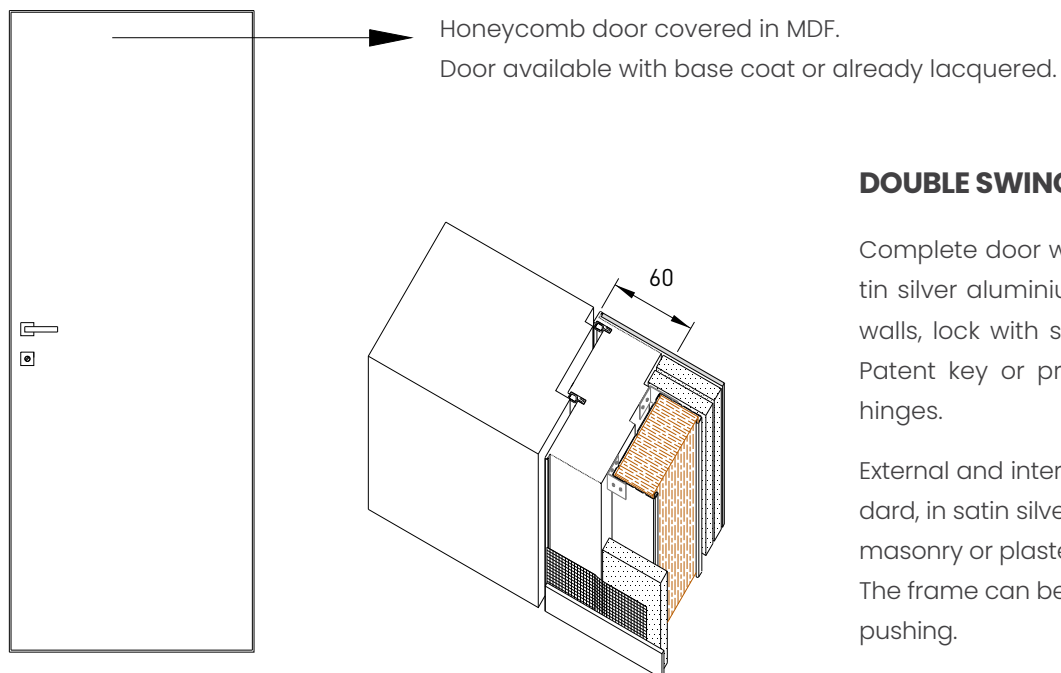


### PULL OPENING DETAIL



### PUSH OPENING DETAIL





## DOUBLE SWING DOOR

Complete door with flush-fitting frame in satin silver aluminium for brick or plasterboard walls, lock with standard magnetic latch for Patent key or privacy latch and concealed hinges.

External and internal flush wall frame as standard, in satin silver aluminium compatible with masonry or plasterboard walls.

The frame can be mounted by pulling or pushing.

Example:

Right-handed to pull = Left-handed to push.

Standard thicknesses to choose between 10.2 and 10.7 cm.

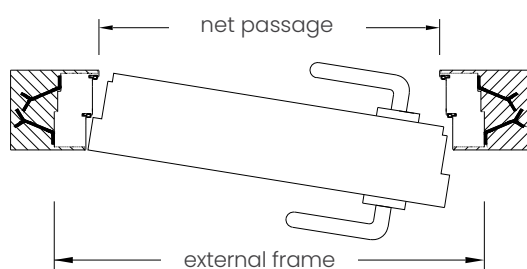
Thickness available on request 12.5 cm.

### STANDARD REFERENCE MEASURES

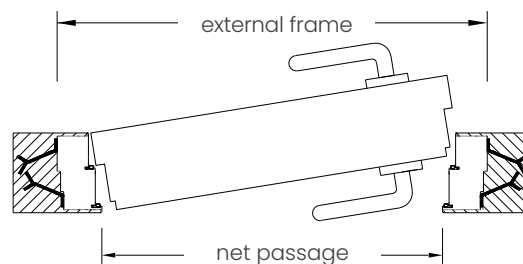
External frame: cm 93,5/103,5/113,5 x 216,8 H

Net passage: cm 80/90/100 x 210 H

### PULL OPENING DETAIL



### PUSH OPENING DETAIL



### OPTIONAL ALUMINUM FINISHES FOR THE WALL-MOUNTED FRAME:

(the hinges always remain in satin chrome finish)

- PA02 matt white - PA03 matte black
- PA05 bronze - PA09 corten - PA11 dark bronze "new" - PA13 sandblasted iron grey
- PA07 white oak - RAL matt sample
- Protective film for wall frame finishing

### SPECIAL PROCESSING FOR THE INSERTION OF THE RECESSED SKIRTING BOARD:

Milling for insertion of the recessed skirting board according to customer specifications.

See dedicated section from pag. 52 to pag. 57

# Data sheet

## Pivot door

### PIVOT DOOR

Door complete with flush-fitting frame in satin silver aluminium for brick or plasterboard walls, lock with standard magnetic latch for Patent key or privacy latch.

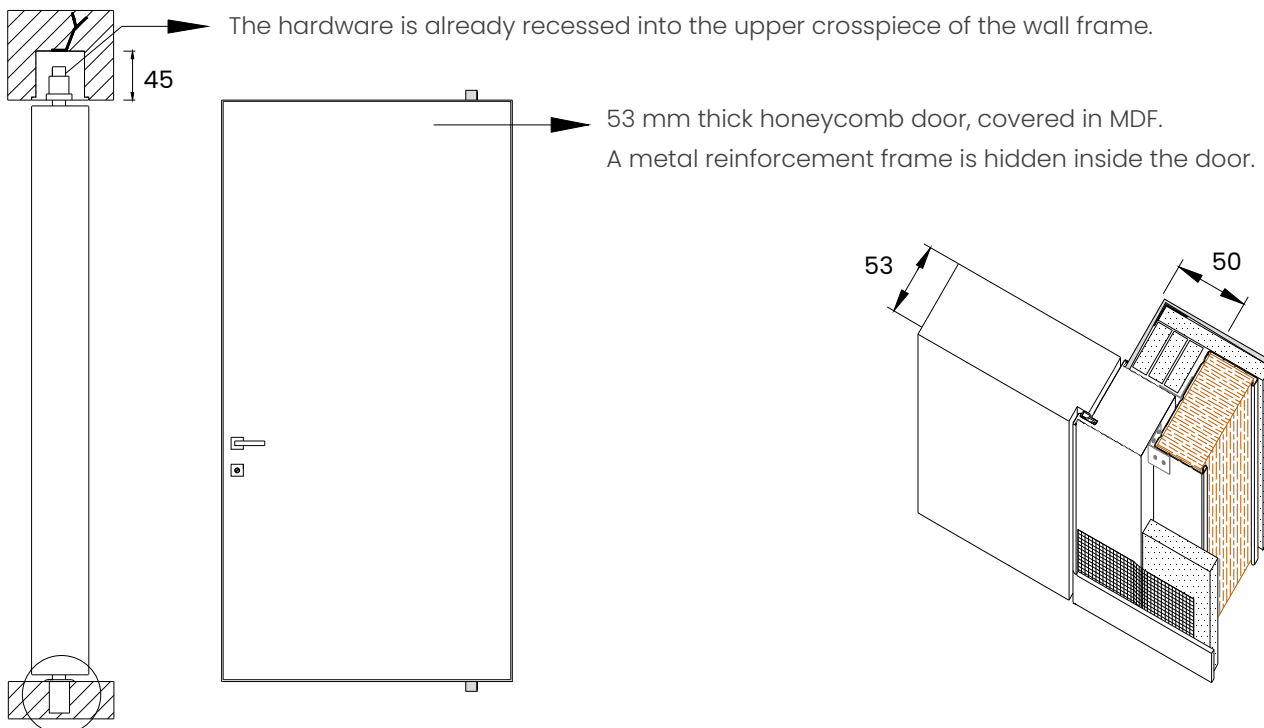
Standard flush-to-the-wall frame, in satin silver aluminium compatible for masonry or plasterboard walls.

The frame can be mounted by pulling or pushing.

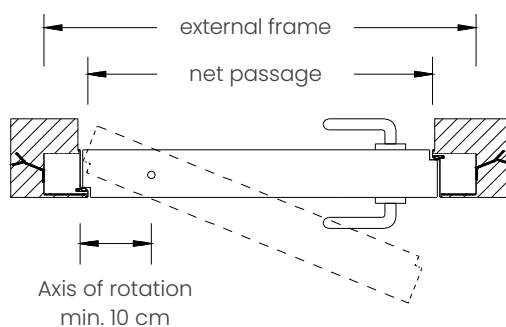
Example: Right-handed to pull = Left-handed to push.

### EXTERNAL FRAME SIZE

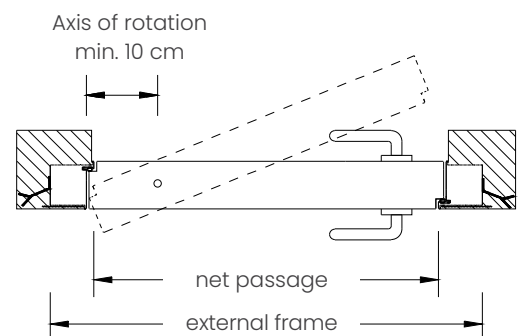
Net passage + 100 mm W and + 45 mm H



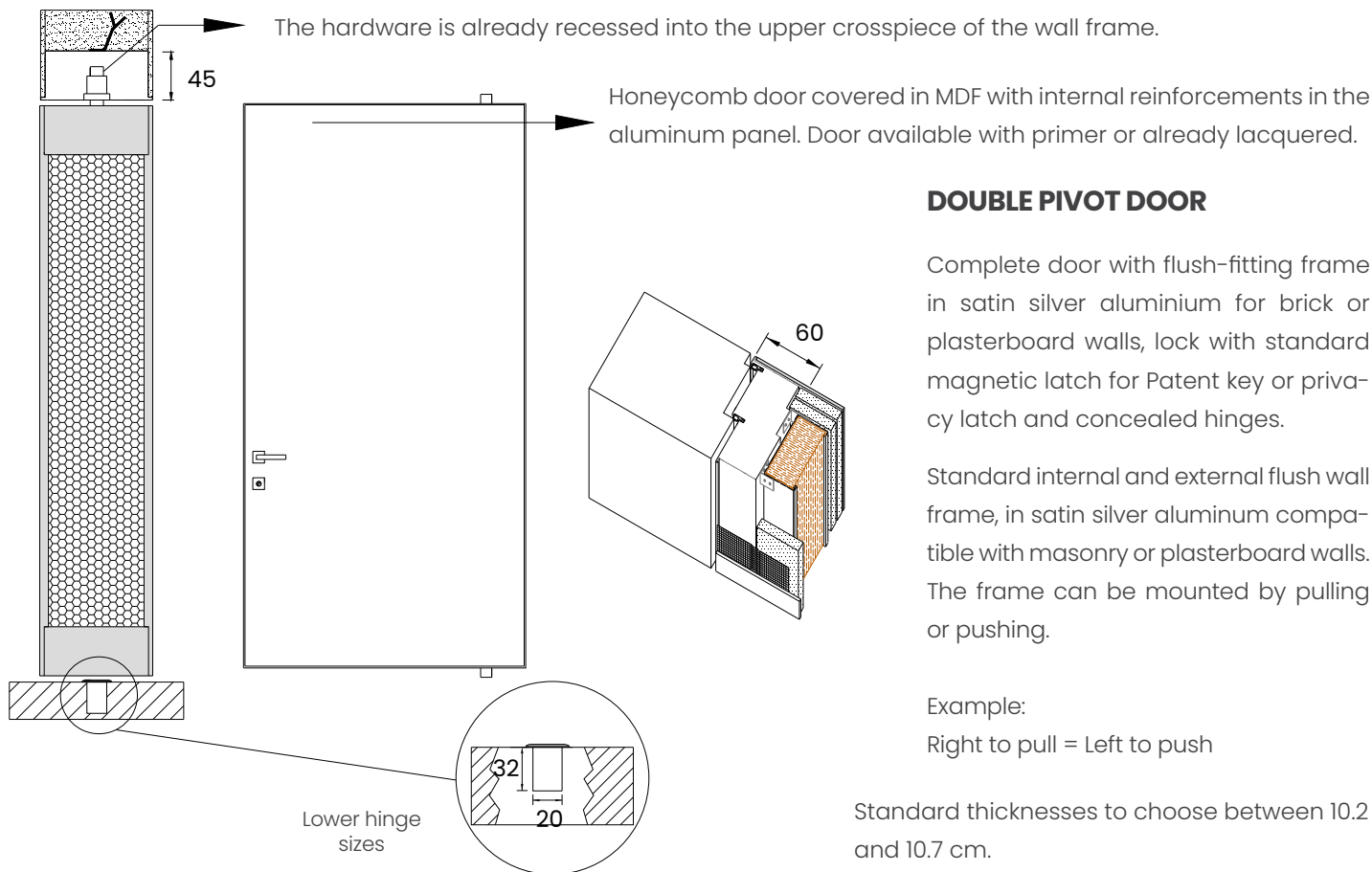
### PULL OPENING DETAIL



### PUSH OPENING DETAIL







**DOUBLE PIVOT DOOR**

Complete door with flush-fitting frame in satin silver aluminium for brick or plasterboard walls, lock with standard magnetic latch for Patent key or privacy latch and concealed hinges.

Standard internal and external flush wall frame, in satin silver aluminum compatible with masonry or plasterboard walls. The frame can be mounted by pulling or pushing.

Example:  
Right to pull = Left to push

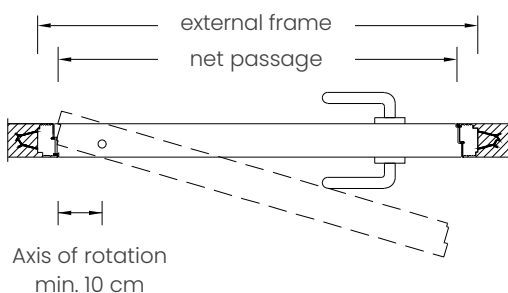
Standard thicknesses to choose between 10.2 and 10.7 cm.

Thickness available on request 12.5 cm.

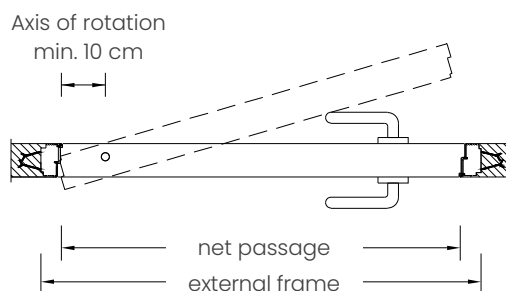
**EXTERNAL FRAME SIZE**

Net passage +120 mm W and +45 mm H

**PULL OPENING DETAIL**



**PUSH OPENING DETAIL**



**OPTIONAL ALUMINUM FINISHES FOR THE WALL-MOUNTED FRAME:**

(the hinges always remain in satin chrome finish)

- PA02 matt white - PA03 matte black
- PA05 bronze - PA09 corten - PA11 dark bronze "new" - PA13 sandblasted iron grey
- PA07 white oak - RAL matt sample
- Protective film for wall frame finishing

**SPECIAL PROCESSING FOR THE INSERTION OF THE RECESSED SKIRTING BOARD:**

Milling for insertion of the recessed skirting board according to customer specifications. See dedicated section from pag. 52 to pag. 57

# Data sheet

*Sliding openings  
outside wall*



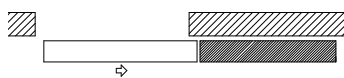
Segreta sliding door | RAL9003 white lacquered door | groove handle MA22

## STAINO&STAINO SLIDING SYSTEM TYPES

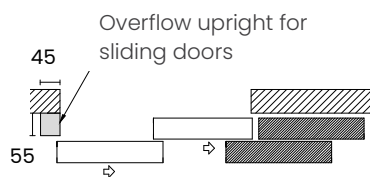
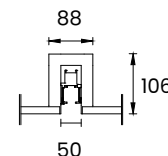
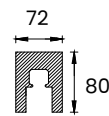
For personalized feasibility requests write to:  
[commerciale@stainoestaino.com](mailto:commerciale@stainoestaino.com)

**Beams with valance**

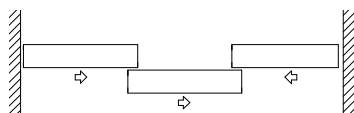
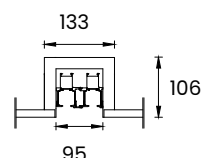
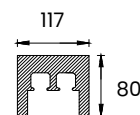
**Adjustable built-in beams**



Sliding door with single track, wall or ceiling mounting.



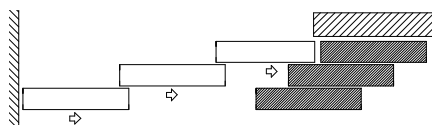
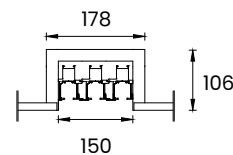
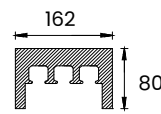
Double-panel door, two-way sliding beam with ceiling attachment.



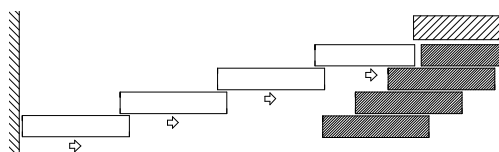
Three-panel door with two-way sliding beam with ceiling attachment.



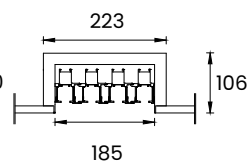
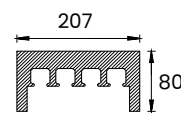
Four-panel door with two-way sliding beam with ceiling attachment.



Three-panel door with three-way sliding beam with ceiling attachment.



Four-panel door with four-way sliding beam with ceiling attachment.



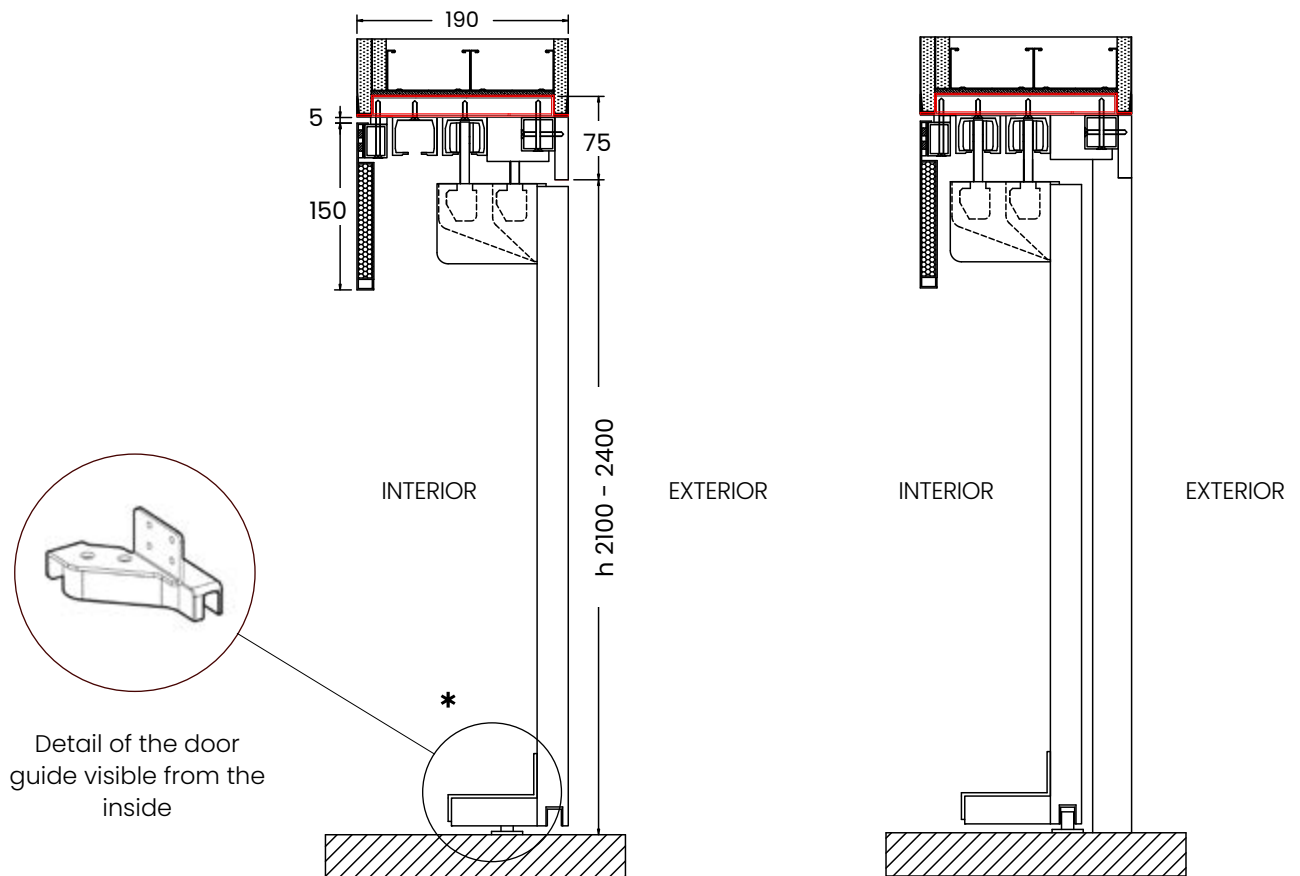
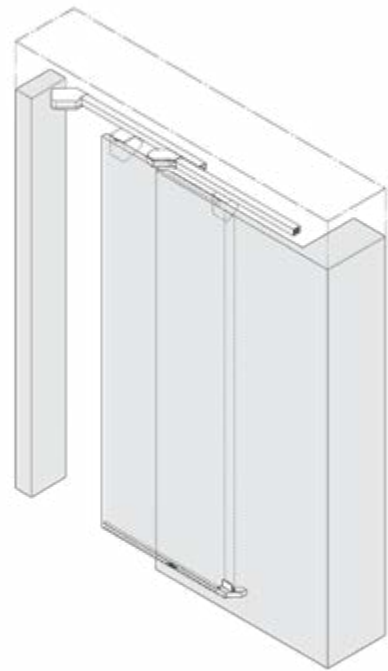
\*examples of sliding openings based on the number of doors. Other types of openings can be made upon request.

# Data sheet

## *Segreta-S coplanar sliding door*

The system remains perfectly flush with the wall from the outside while, on the inside, the covering valance and the aluminum trolley covers remain visible. Also from the inside, the particular door guide is visible in the lower part; this is to ensure correct operation and a certain ease of intervention for any future maintenance of the product.

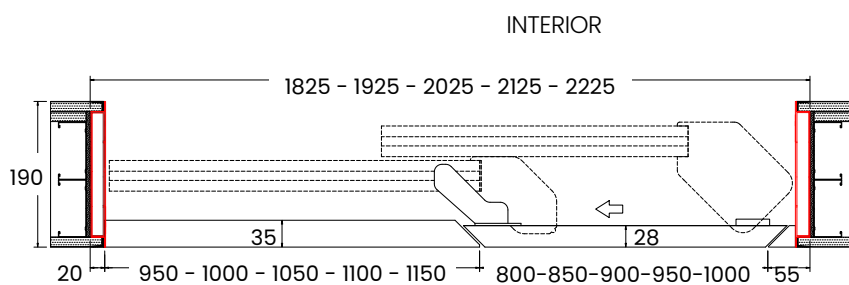
Given the aesthetic characteristics of formal cleanliness of the outside and the technical characteristics visible from the inside, we recommend using the Segreta-S coplanar sliding door to close those spaces where aesthetic formality is necessary on one side only, such as, for example, the closure of a pantry or a wardrobe compartment.



**DETAIL OF SKIRTING BOARD**



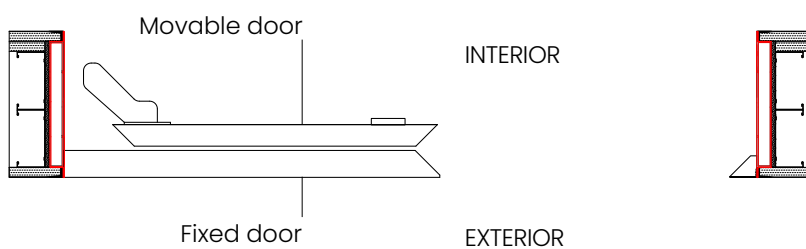
operation video of  
**Segreta-S door**



Sliding closure composed of a fixed panel and an opening panel made of reinforced honeycomb covered in MDF.

EXTERIOR

Perimeter frame in extruded aluminum to be finished flush with the wall, two-way sliding system, adjustable trolleys, movable internal valance and special adjustable door guide visible from the inside.



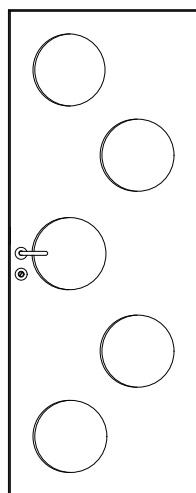
# Pantographing

*Available pantographing on  
matt lacquered MDF panels*

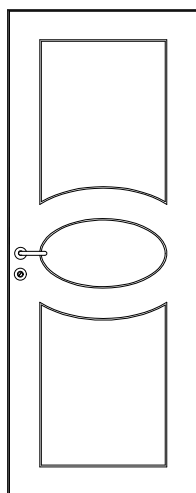


Master swing door | pantographed door with custom design and lacquered in white RAL 9003 | custom handle

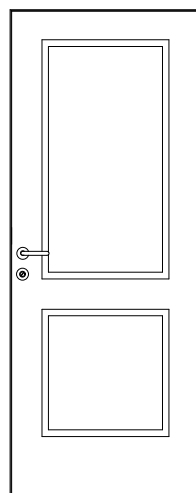
Pantographs available on lacquered MDF panels on doors from the Segreta, Master and Revolution®collections.  
 For custom designs, ask for feasibility and prices at: [commerciale@stainoestaino.it](mailto:commerciale@stainoestaino.it).



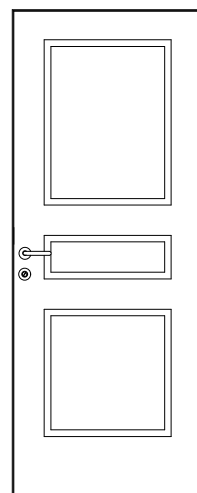
DP01



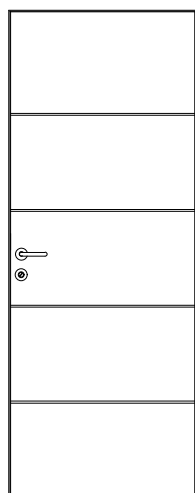
DP02



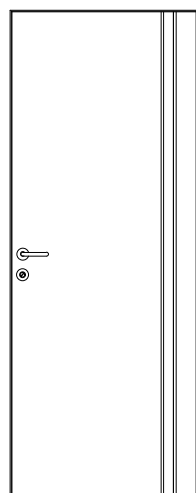
DP03



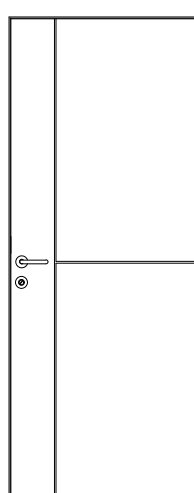
DP04



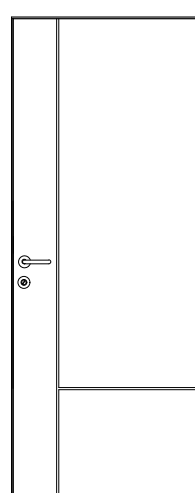
DP05



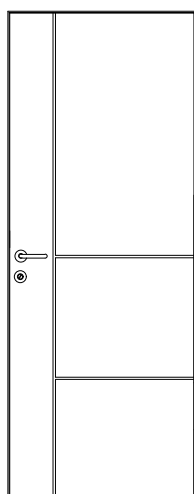
DP06



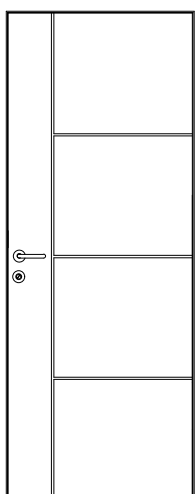
DP07



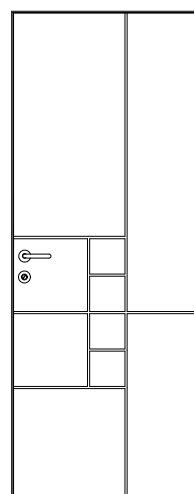
DP08



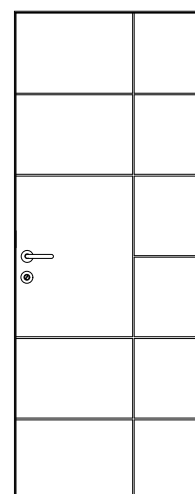
DP09



DP10



DP11



DP12

# Finishes

*Door and frame  
finishes*



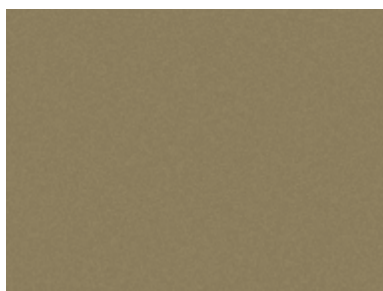
**Segreta** flush-to-the-wall swing door | door lacquered in RAL sample colour | coplanar handle MA13



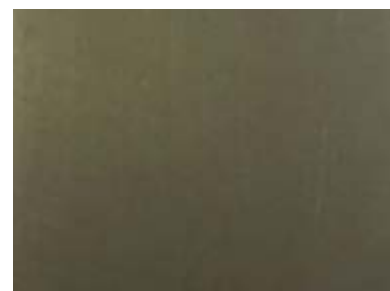
# Frame finishes



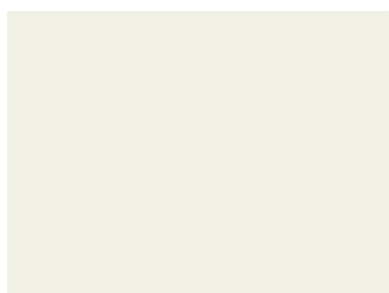
**PA01**  
Satin silver



**PA05**  
Bronze



**PA11**  
Dark bronze new



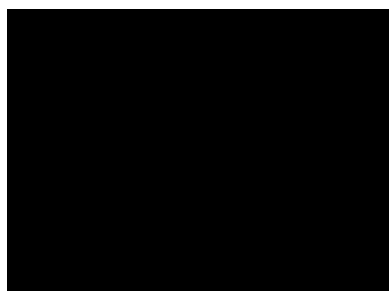
**PA02**  
Matt white



**PA07**  
White oak



**PA13**  
Sandblasted iron grey



**PA03**  
Matte black



**PA09**  
Corten



**RAL**  
Lacquered color of your choice\*

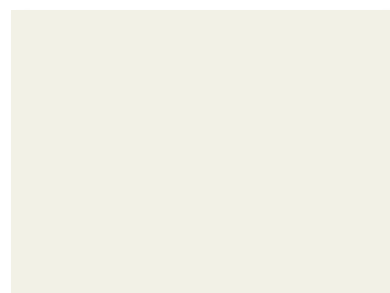
# Door finishes



**RAL**  
Lacquered color of your choice\*



**NCS**  
Lacquered color of your choice\*



**RAL9003**  
White lacquered

\* finish available on sample

# Finishes

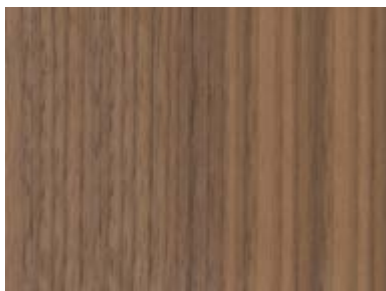
*Wood essences*



**Segreta** flush-to-the-wall swing door | **custom** wood finishes door | **custom** handle



**EL01**  
Natural oak



**EL05**  
Natural Canaletto Walnut



**EL08**  
Natural Mahogany



**EL03**  
Natural/dry oak  
saw effect



**EL06**  
Natural Canaletto Walnut-  
saw effect



**EL07**  
Natural/dry Mahogany  
saw effect



**EL11**  
Bleached oak



**EL10**  
Natural/dry Canaletto Walnut  
saw effect



**RAL**  
Wood essence of your choice\*



**EL12**  
Grey oak



**EL13**  
Dark oak

\* finish available on sample

# Online catalogues

*downloadable from our website [www.stainoestaino.it](http://www.stainoestaino.it)*



## Doors

Swing and pivot doors, flush-to-the-wall anche double sided flush-to-the-wall



Download the  
**Catalogue**



## Sliding Doors

Sliding doors and sliding systems



Download the  
**Catalogue**



## Segreta

Invisible flush-to-the-wall doors



Download the  
**Catalogue**

# Online data sheets

downloadable from our website [www.stainoestaino.it](http://www.stainoestaino.it)



## Easy-S

Sliding, swing and pivot doors with thin profile



Download the  
**Data sheet**



## Extra Light

Sliding, swing and pivot doors minimal



Download the  
**Data sheet**



## iDoor®

Flush-to-the-wall doors with rounded edges



Download the  
**Data sheet**



## Master

Flush-to-the-wall doors in lacquered glass



Download the  
**Data sheet**



## Revolution®

Doors with continuous frame



Download the  
**Data sheet**



## Glass

Glass doors



Download the  
**Data sheet**

Staino&Staino srl | Via Danubio, 21/23/25 59100 Prato - Italy | Tel +39 0574 69 39 38 | Fax +39 0574 69 43 55 | [www.stainoestaino.it](http://www.stainoestaino.it)  
[amministrazione@stainoestaino.it](mailto:amministrazione@stainoestaino.it) [commerciale@stainoestaino.it](mailto:commerciale@stainoestaino.it) [export@stainoestaino.it](mailto:export@stainoestaino.it)

STAINO&STAINO SRL is not responsible for any inaccuracies contained in this catalogue due to printing errors or for any other reason. STAINO&STAINO reserves the right to make changes to improve the products without prior notice. The reproduction without authorization, even partial, of the texts and images contained in this catalogue is strictly prohibited by law.